

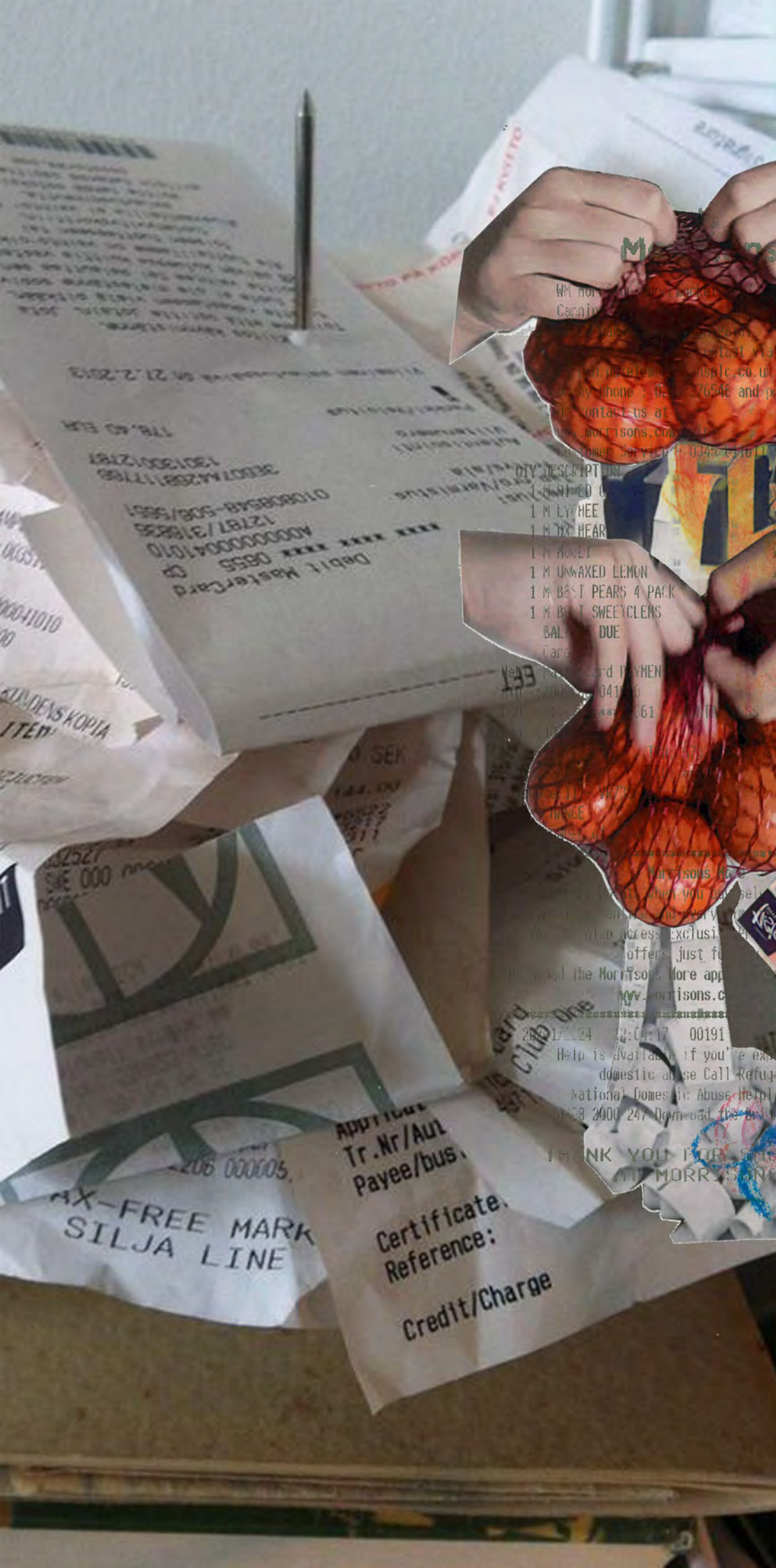


'What do you wear?'

People buy things everyday. We eat for living, we dress for covering and surviving. You went back home and check the receipt for what you bought in your home wear. In this collection, I try to blur the boundary between home wear and daily dressing. Is this a home wear? Or an outer wear? Or maybe just wear it if you want. Making garments that can go across different wearing situations which increase its utilization frequency. A mixing between leisure and delicacy, retro and modern, traditional classics and industrialize outcomes.

The point of departure is through a thinking around purchase. We all consume now and then in every daily aspect. Dinning is the most basic habits that everyone holds for living. Taking apple peeling as a kind of metaphor, an ephemera. We peel the apple and threw the apple peel into garbage bin. Through this series of behavior that derive from our intention to eat, the **skin** of apple become the waste. The apple peel dangle down like the dangled receipt that proof what you bought. Receipt and the apple peel all goes into the garbage bag in the end, what about the others? Looking around, is everything become a waste one day? Clothes stay in the position of our second **skin**, are we wearing garment, receipt, apple peel or a future waste? Trying to bring these ideas into my collection.

Wanqing Jiao (Anny)
jiaowanqing200@163.com
+44 7895473911
@annyyya28



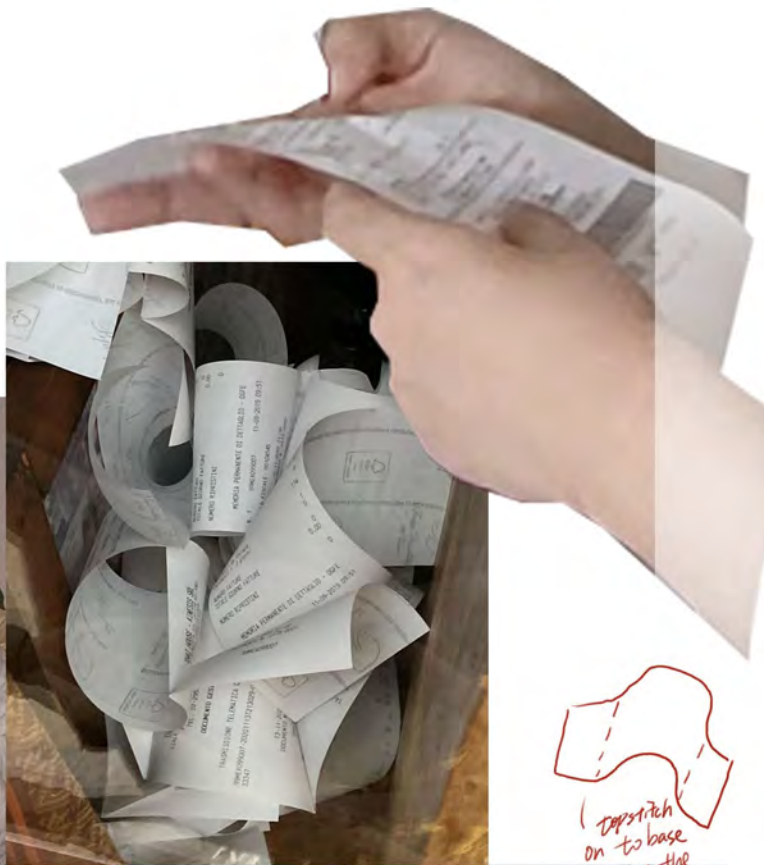
QTY	DESCRIPTION	PRICE
1	UNWAXED LEMON	£1.12
1	LYCHEE	£1.00
1	HEAR	£1.16
1	APPLE	£1.49
1	UNWAXED LEMON	£1.12
1	BEST PEARS 4 PACK	£2.35
1	BEST SWEETCLENS	£2.15
	BALANCE DUE	£10.26
		£10.26



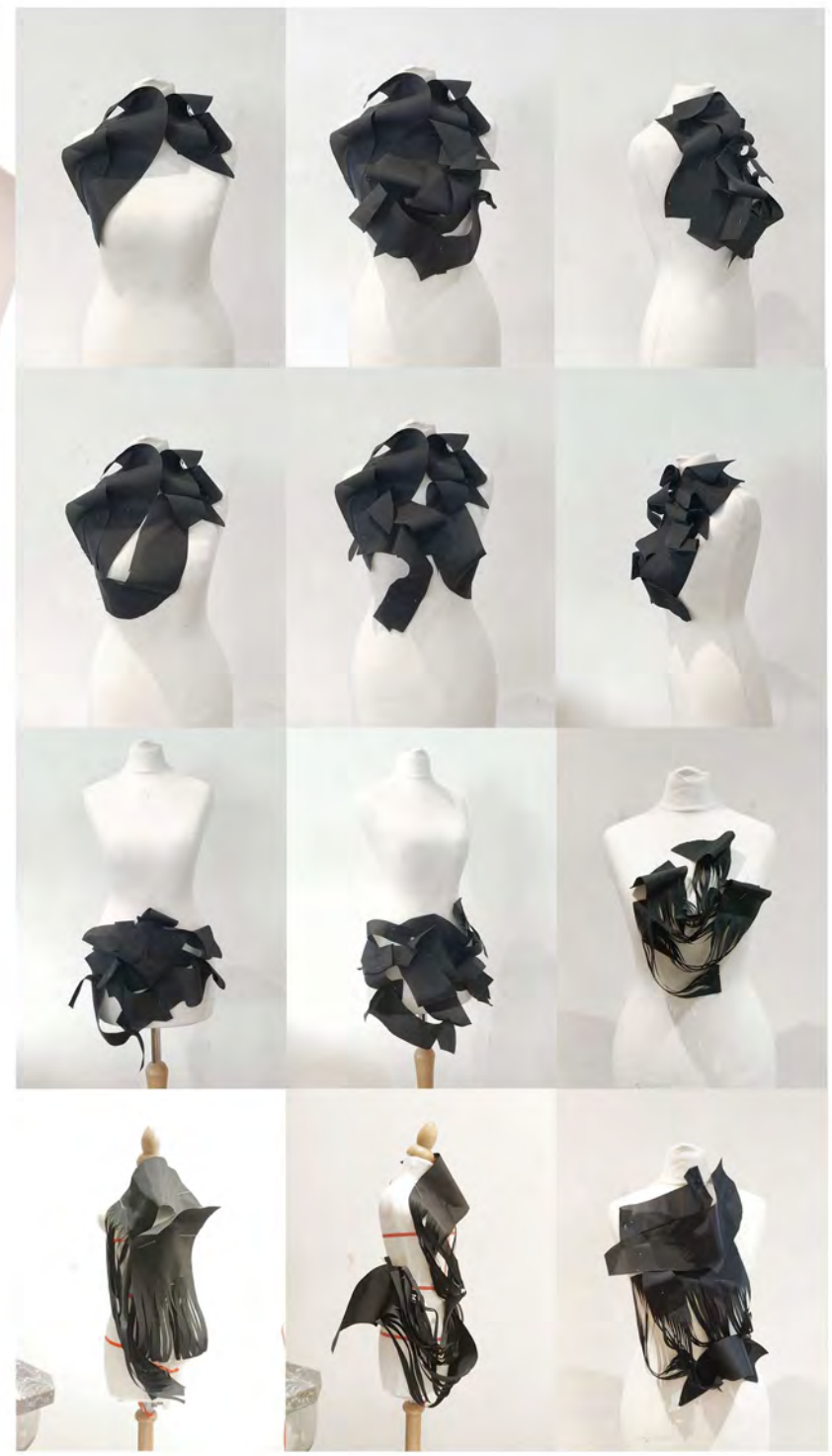
Kenne Gregoire

"In a number of Gregoire's still lifes paintings, the perspective is so distorted that the objects and background appear to represent a different perspective. As a result, the artist seems to want to make the viewer aware that we are looking at an illusory piece of reality, framed and only born out of the artist's imagination."
—Gallerease



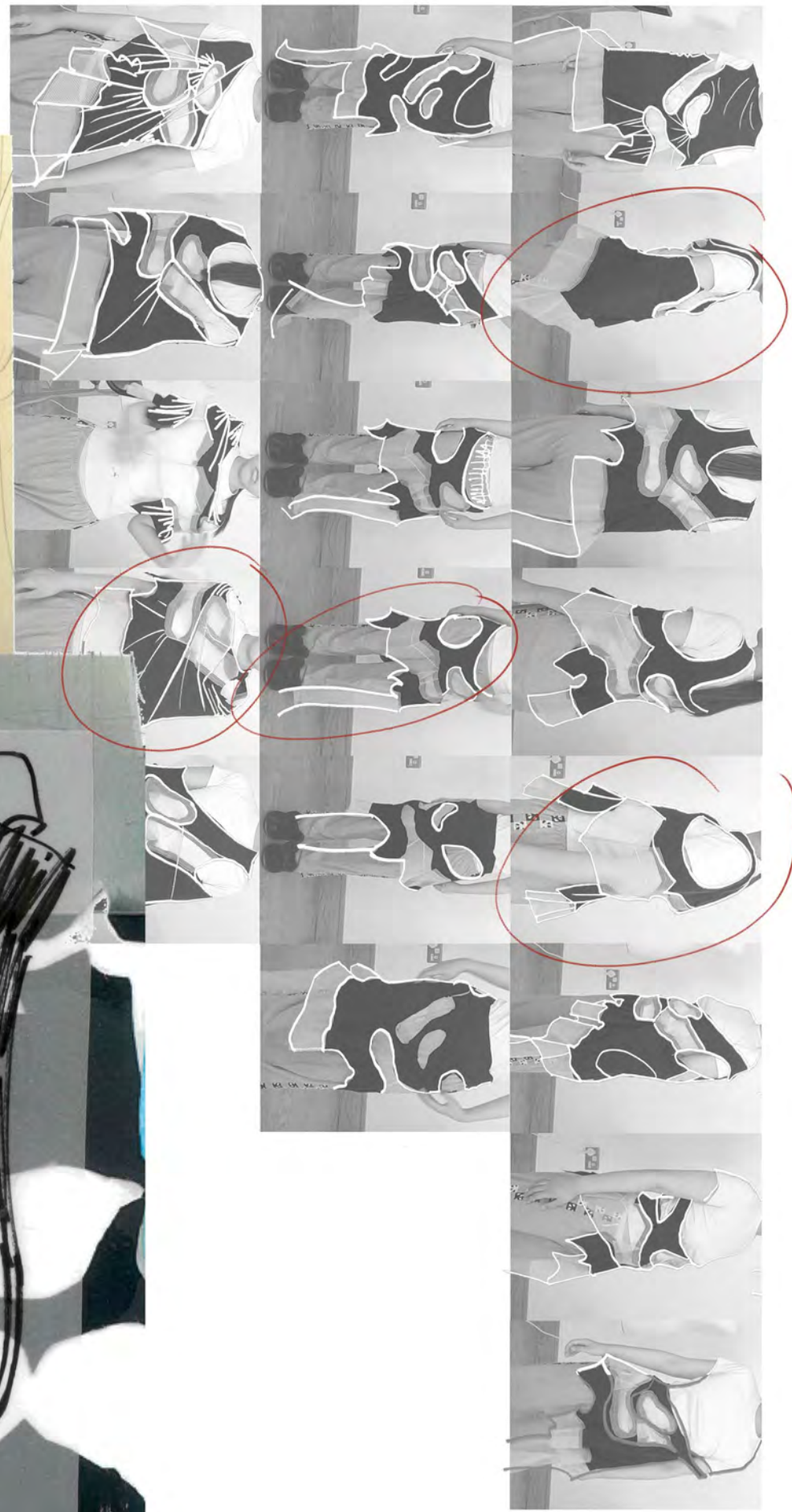
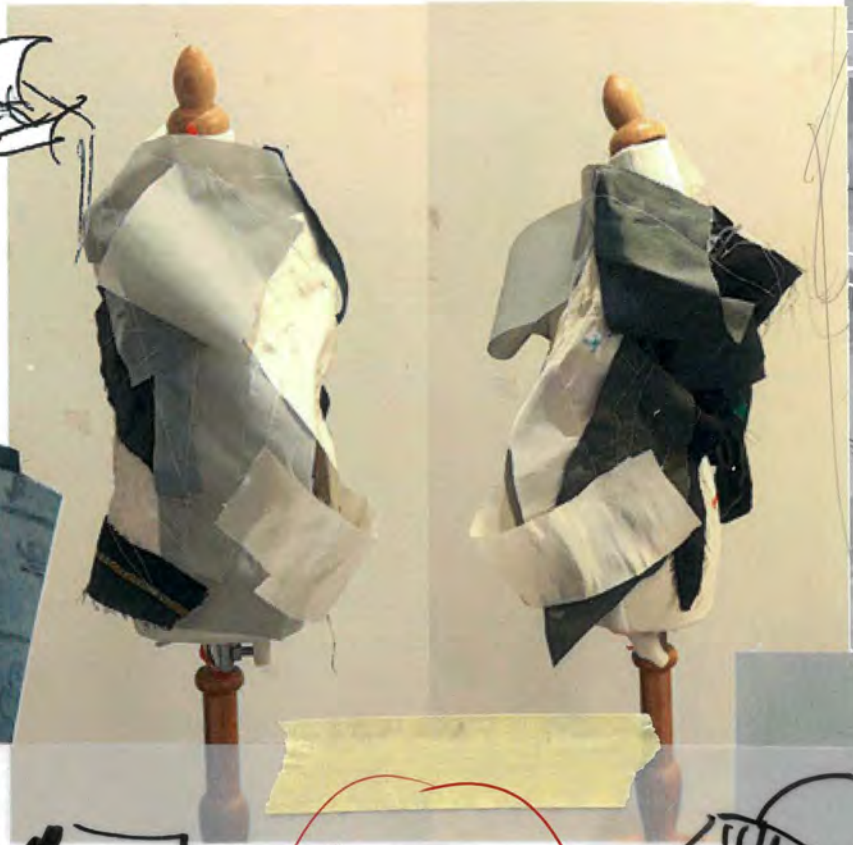
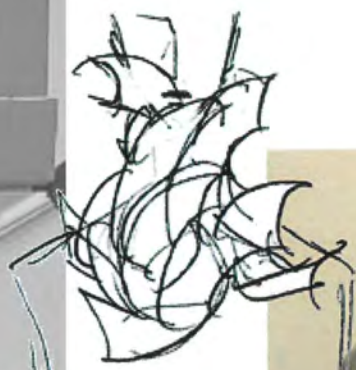


Stick on to base following the drapemark





leftover offcut fabrics
from previous projects

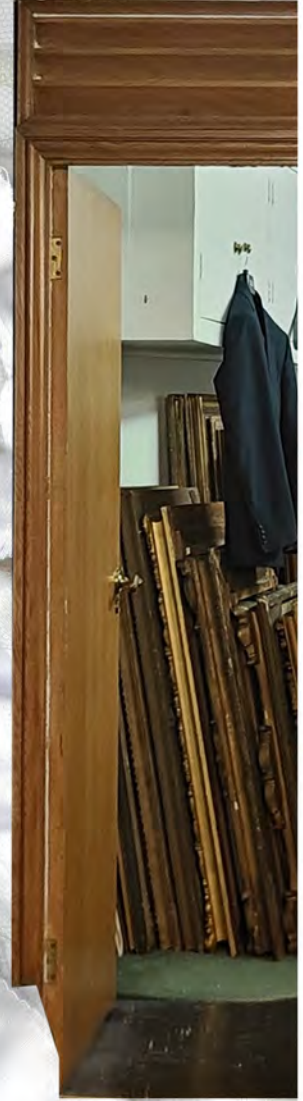


line fit. Also by doing this, there is a kind of texture pleating appear, which is nice and looks more like apple.

It can't be fully watch in this way, so need to use the elasticity of jersey.



in comparison to elastic to the right & wrong side of the apple peel.



fabric layering and topstitching



following the spiral experiments from last page, also the shaping of apple peel on plate, try making that sample bigger and by making it in jersey & lace.



"the twin clothes"

two side of the apple peel?

Kenne Gregoire



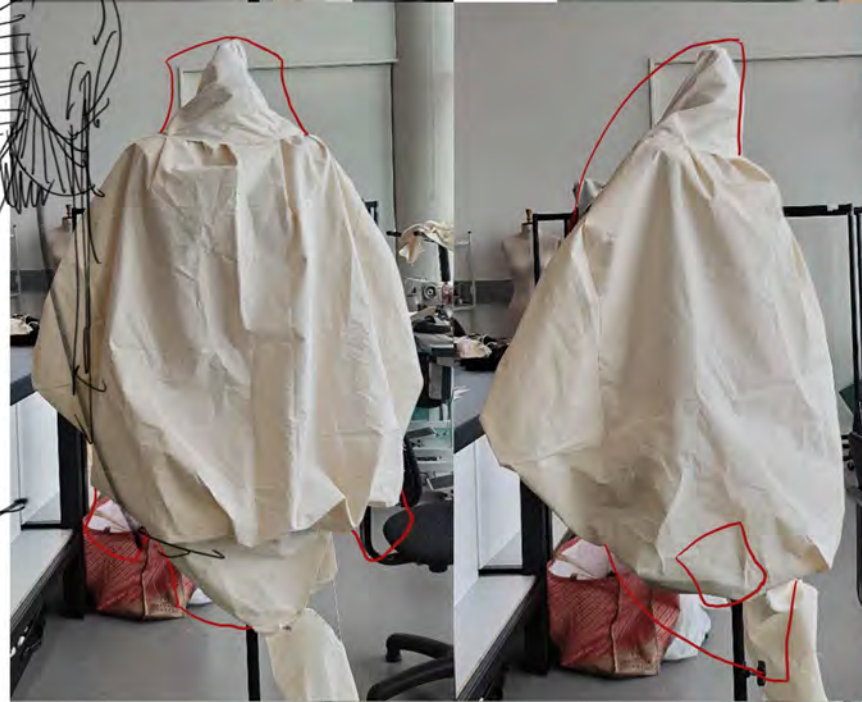
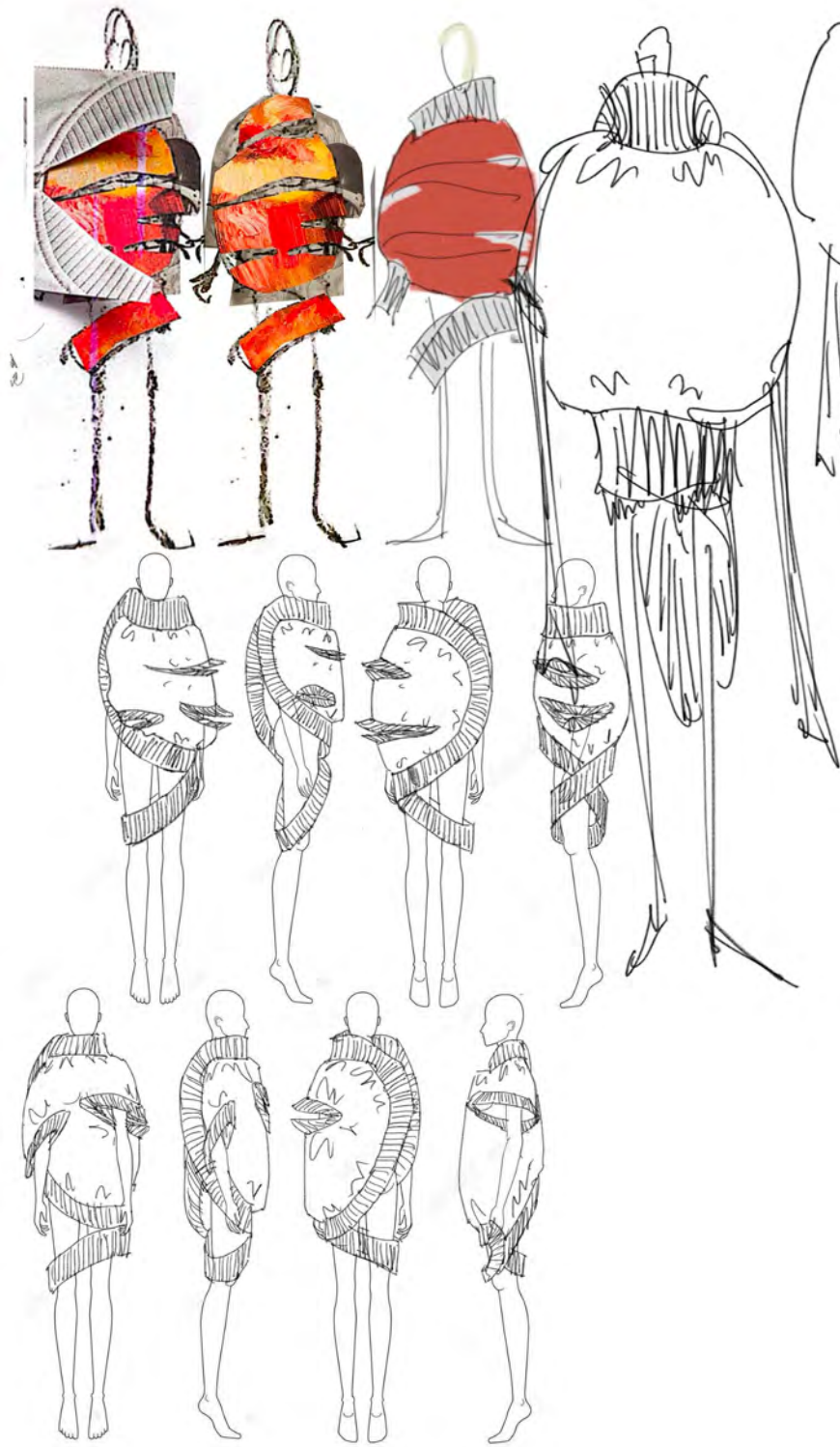
apple

apple

this print is using thermal sublimation transfer, it can only be used on synthetic or synthetic mix fibre



if print apply on to toile



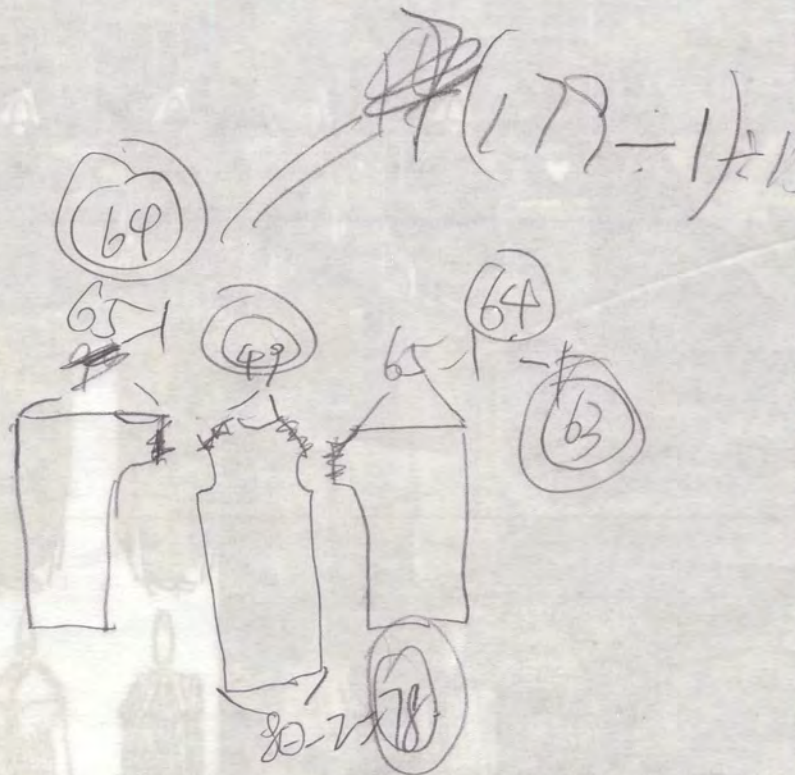
the final fabric



$$17 \times 3 + 1 = 52$$
$$16.87 \times 3 + 1 = 51.61$$

$$64 + 49 + 63 + 78 = 254$$

the final length



the final version 6





1st fitting to do



The final fabric making: by incorporating the traditional Chinese calligraphy and painting mounting technique, the offcut fabrics can be paste together to form new fabric pieces. The paste used is self-made by mixing plain flour with water. The new formed fabric piece is in a stiffened format due to the use of paste which allow it to create structural effect.

The three samples showing here are made with different back flat have better fluidity and so this one. This is used as the 2nd fitting, the first one is with soft muslin, the second one with 1st fitting, the last one with soft muslin. By incorporate the traditional Chinese calligraphy and painting mounting technique, the offcut fabrics can be paste together to form new fabric. The paste is self-made by using plain cooking flour and water.

2nd fitting to do
the shaping of the first layer is not enough, should be lower & longer





Outfit ③ fitting note

change to jersey base

the pleat is also not enough here

change this to knit

changing from this

too long - shorter for final

change the waist side the waist one shorts

top design rethink

try more pleating layers? bottom?

rethink the material / shape / making of the collar



from long? light rib? try elastic material maybe

smooth the shape

keep these unsewn version

all these are made base on adding material onto base
↳ X for the final, change to connecting each layer together
echo back to the design and the archetype

different ways of finishing

panel connect and topstitch reference



carbon width
the final
binding

cut from the
garment fabric
and sew in
contour machine

(carbon width)
- the final
threading
in satin binding
material

made from the fabric
a little too thick for
thread, looks heavy

made from
silk, correspond to
the other outfit, but
the other outfit?

binding & threading trials

