



Family zone: He soft part.

That Females Toughness

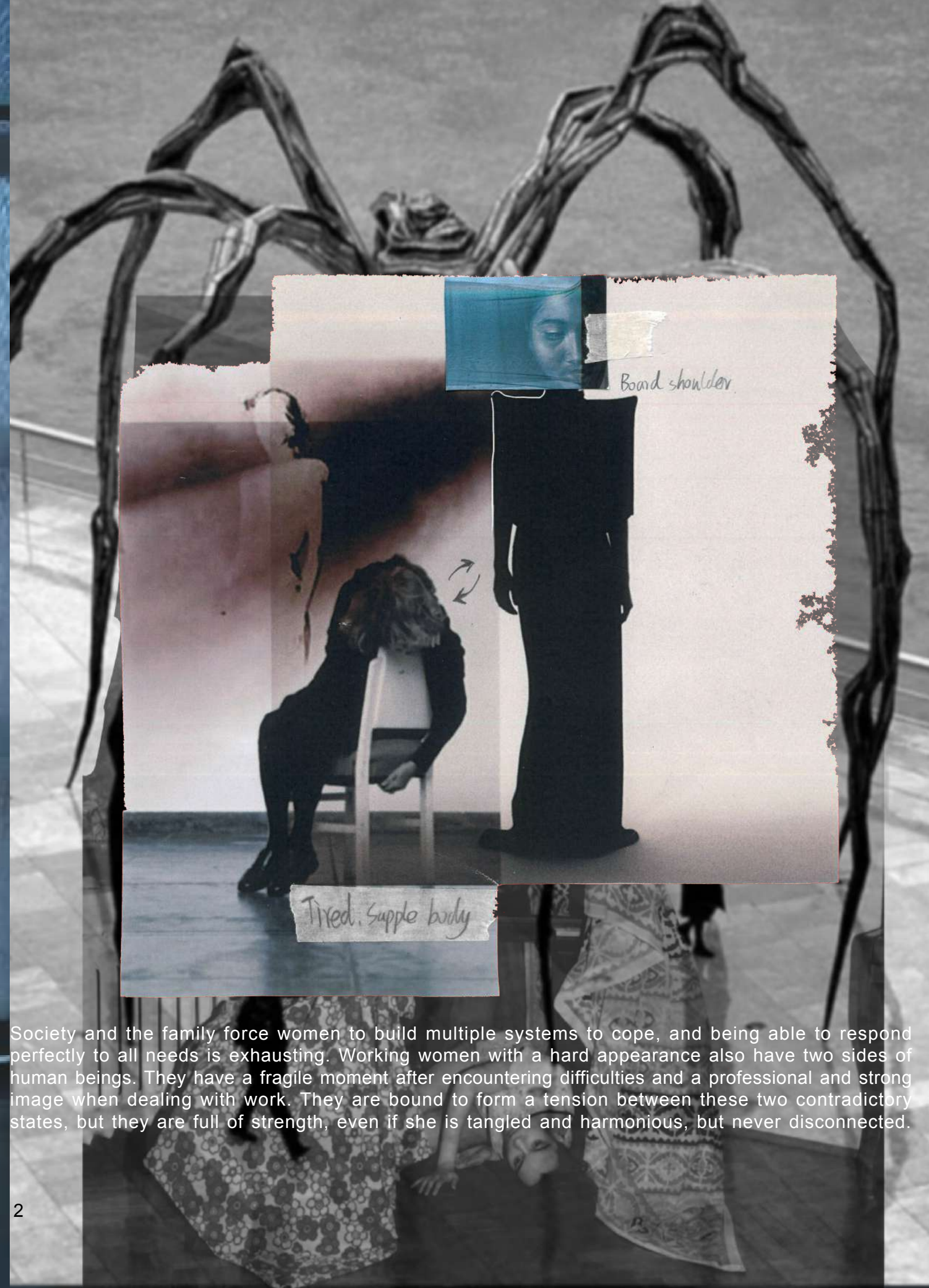
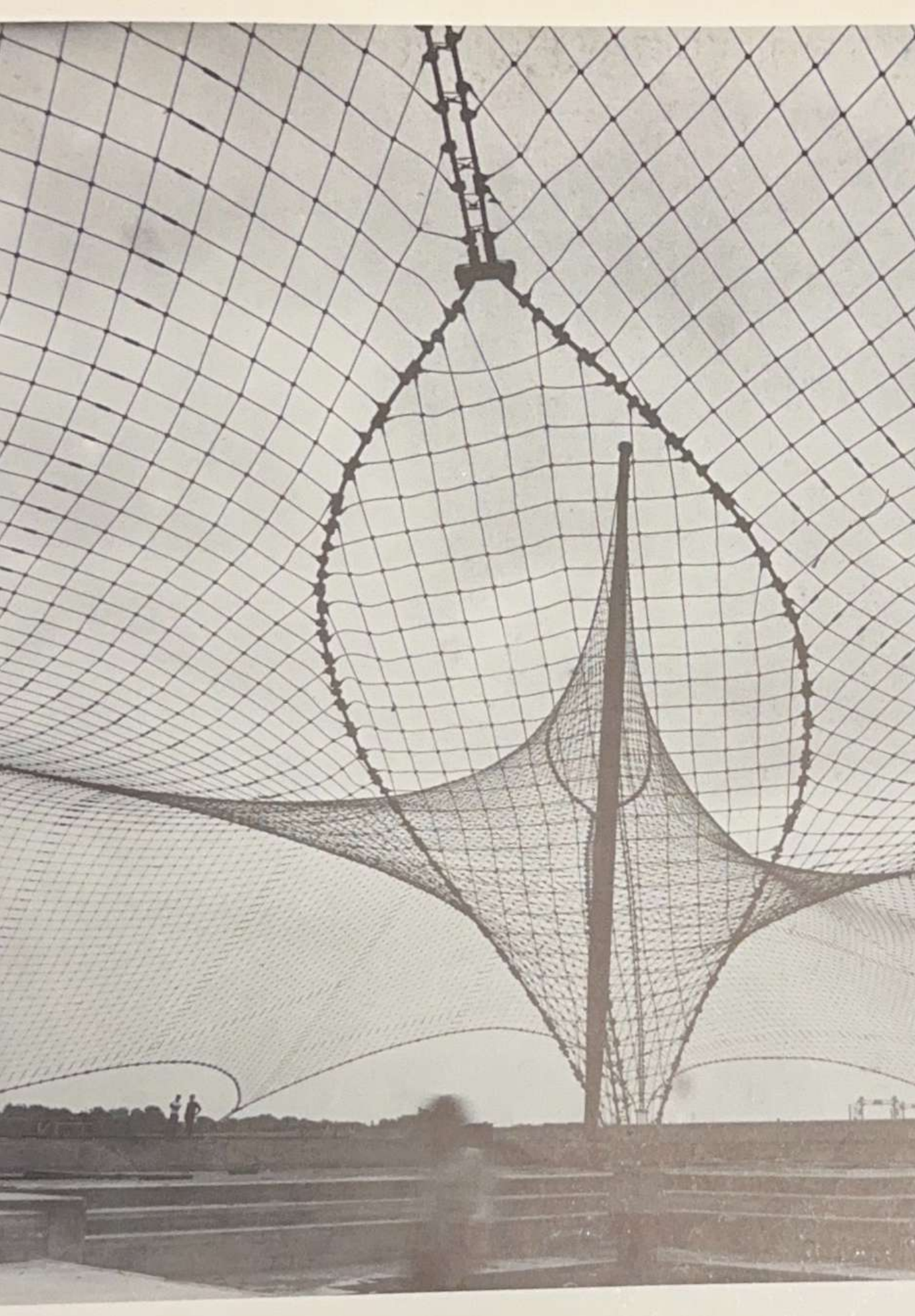
[Since 2024]

The theme was inspired by my mother. a hard and soft figure. I remember her as a strong, independent career woman, and one thing made me see her other side. She has caused physical harm to herself due to emotions and pressure, which is the tension between her hardness and fragility. *Women are flexible, two opposing elements intertwine and pull together to form a complete person.*

The style of the work was influenced by China's workplace fashion around 2000. The work aims to explore the deep image of women, provide inner support for working women, and meet the combination of work and rest time design. With special pulling and twisting methods, two opposing fabrics to create a harmony between soft and hard, just like a 'toughness' woman.



Figure.1
Laura Berger



Board shoulder

Tired, supple body

Society and the family force women to build multiple systems to cope, and being able to respond perfectly to all needs is exhausting. Working women with a hard appearance also have two sides of human beings. They have a fragile moment after encountering difficulties and a professional and strong image when dealing with work. They are bound to form a tension between these two contradictory states, but they are full of strength, even if she is tangled and harmonious, but never disconnected.

flared trousers
low waistline



Slim-fit leather jacket
Can be formal Can be daily

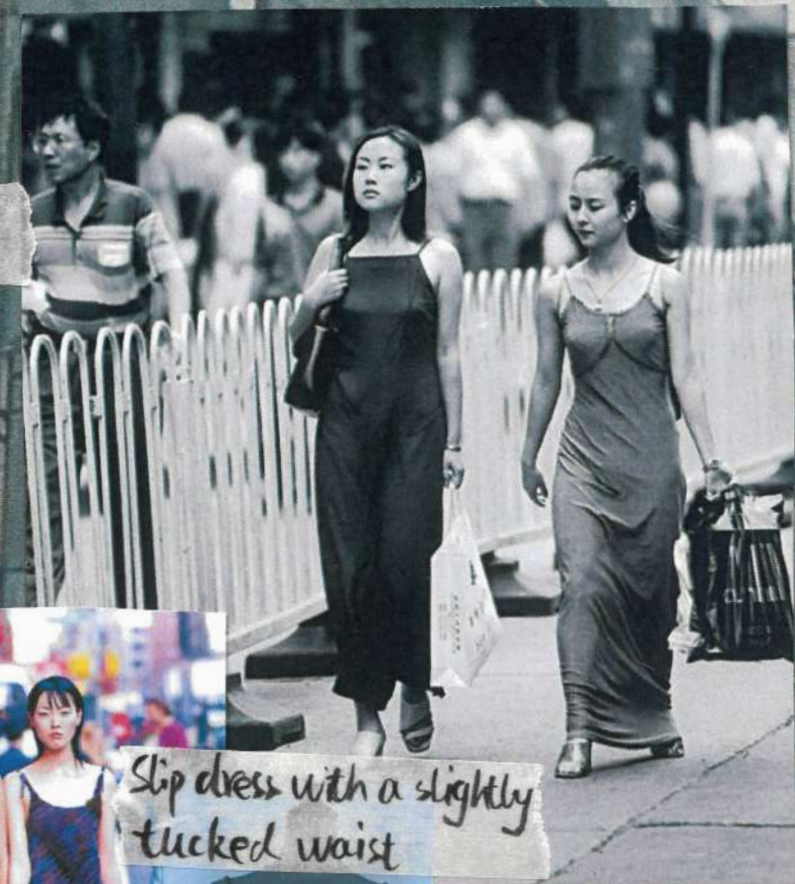


formal suit with
dress or trousers



Working young Women around 2000 were
balancing formal suits with everyday wear
The modified formal garment was loved
by them.

puckered hip skirt



Slip dress with a slightly
tucked waist

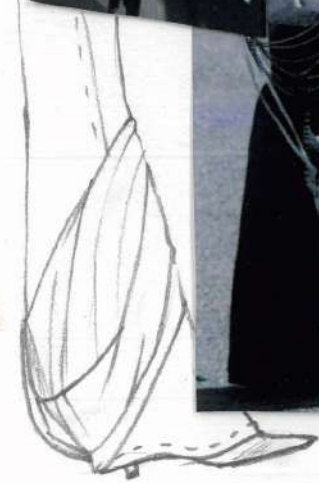
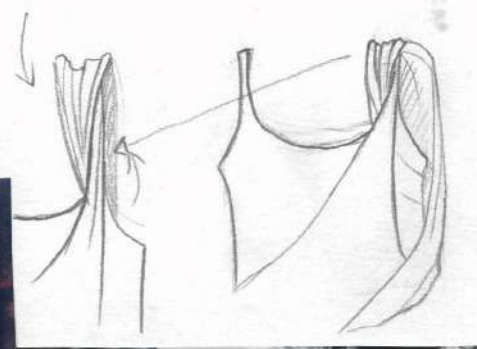
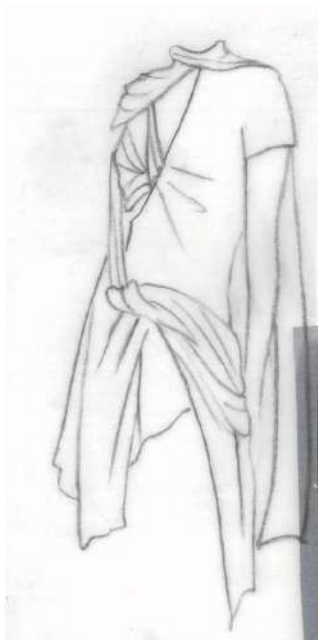
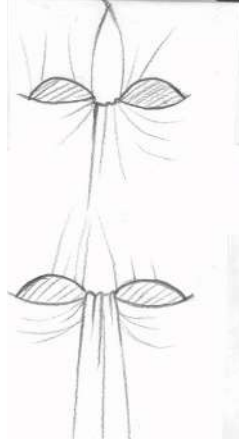




Invitation
Sylvie Guillem

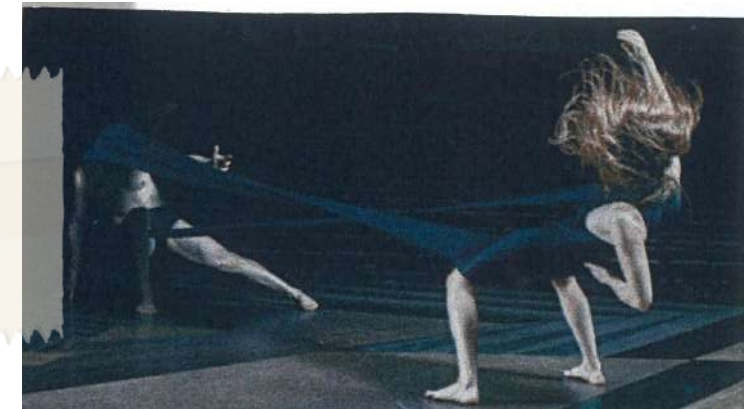


transfer

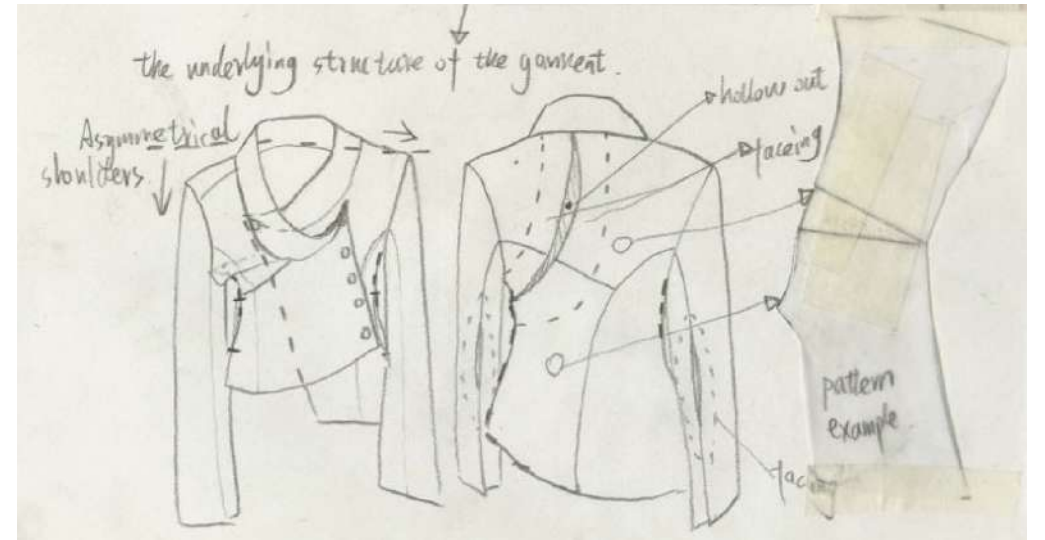
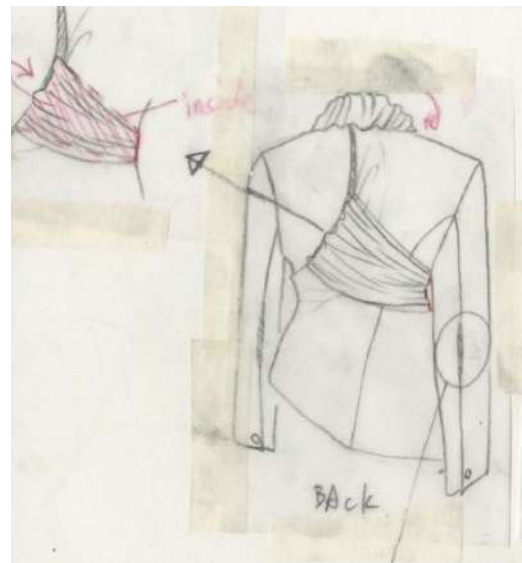
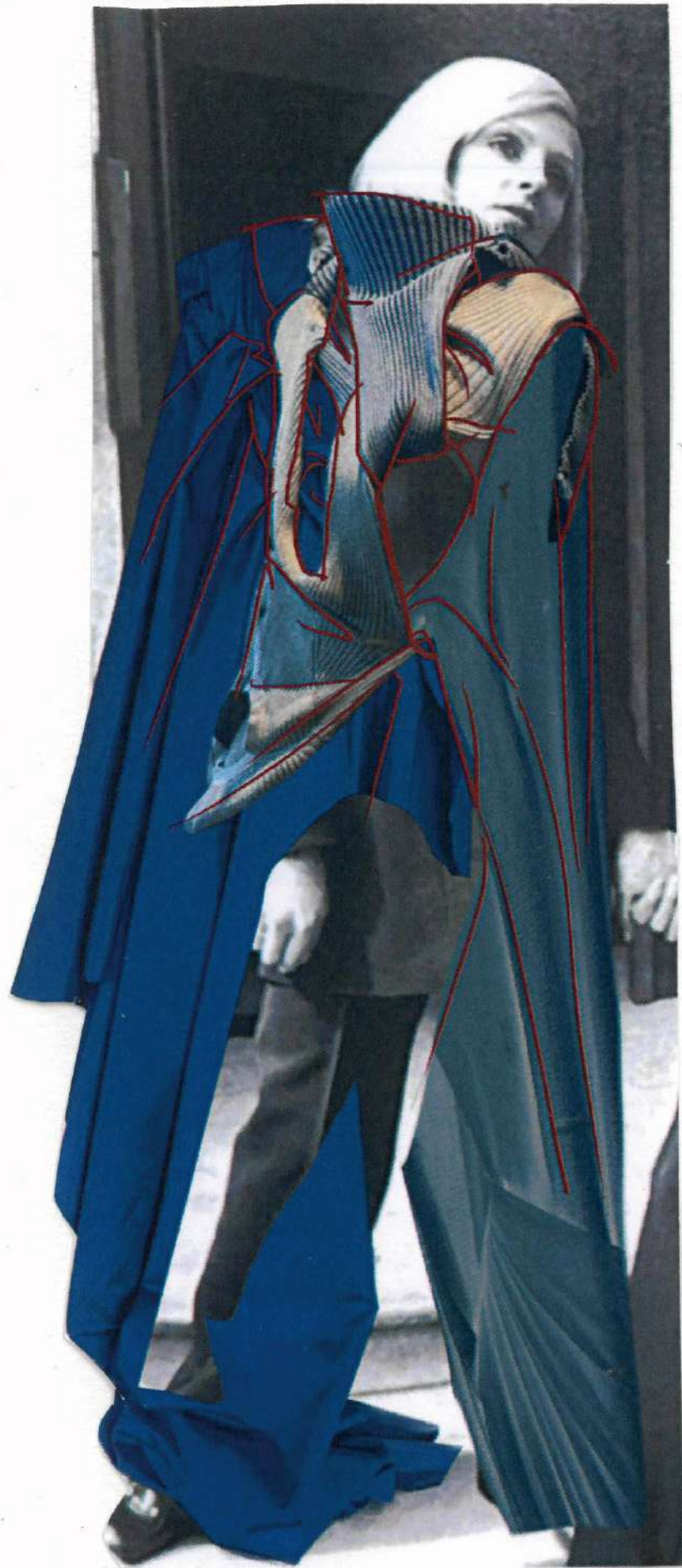


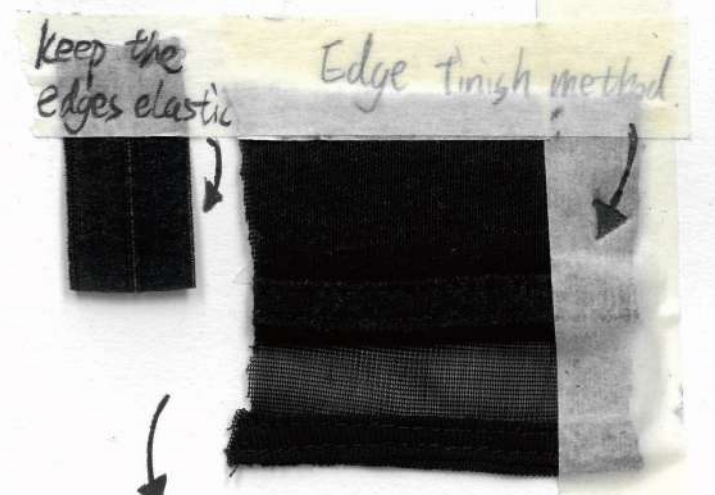
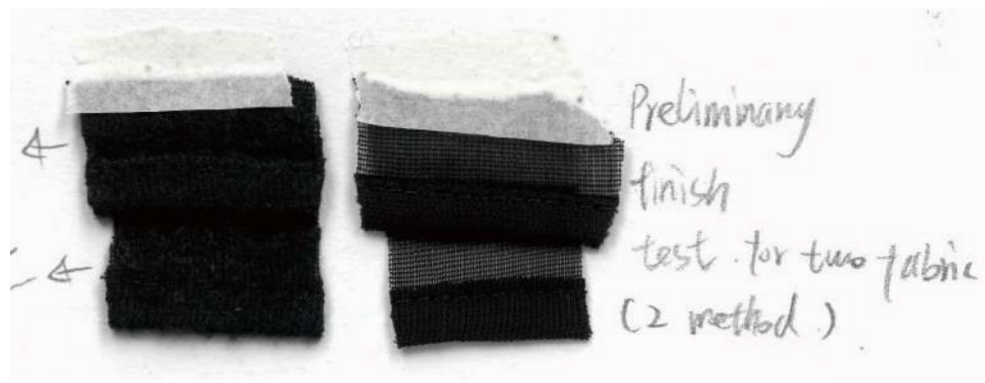


I use woven fabric to create three-dimensional shapes with angles, which are topped with soft jersey fabric. Through the interspersing structure of inside and outside, they pull and distort together, creating a contradictory but harmonious state.

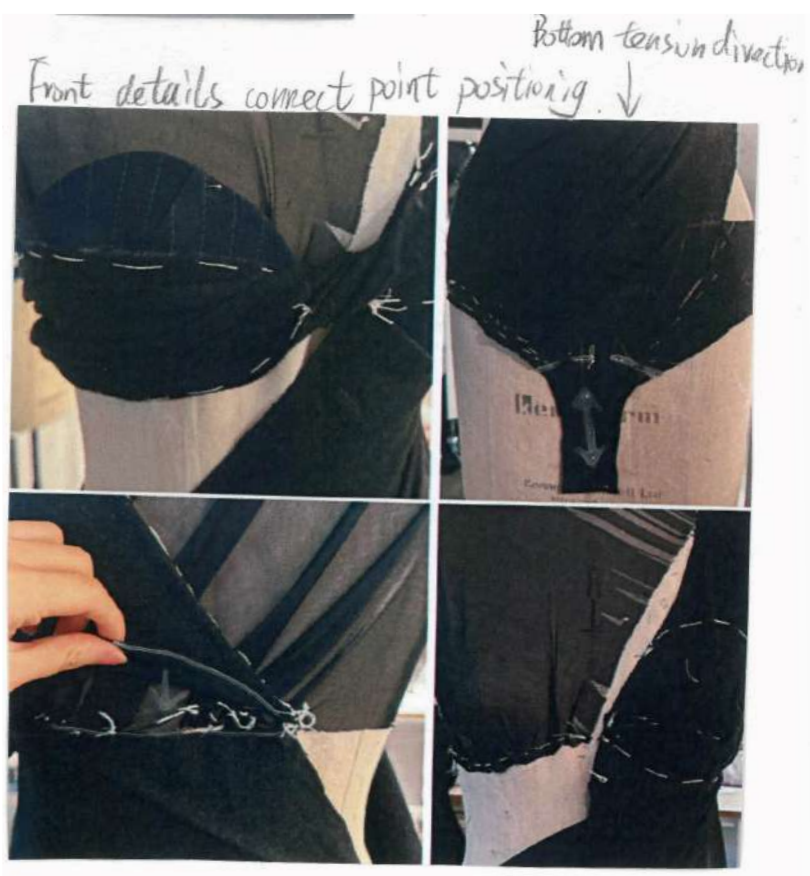








Neckline edge need elastic and the side edge.



add some fold on the side as well.

Remove the way jersey wraps woven fabric's part detail. make the woven part free.



Back need more free



The neckline need narrow a little bit.



side shap detail

more wider



fitting fabric

but a little thick change ca

X ✓ ✓



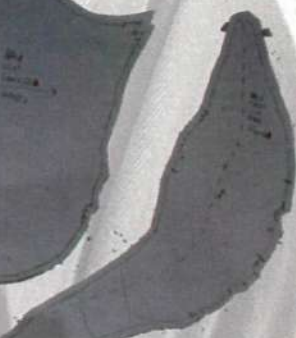
Front



Back



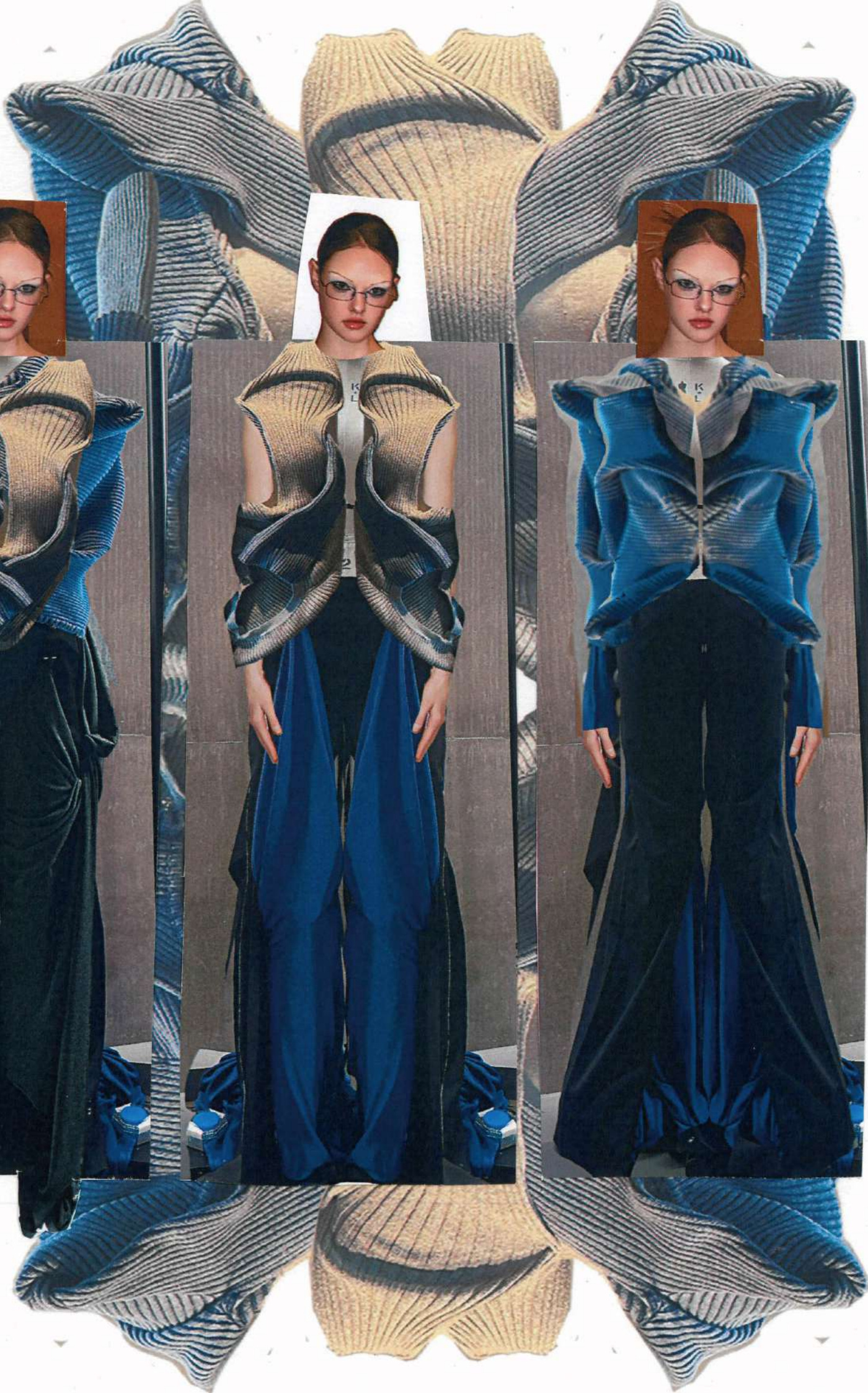
Side



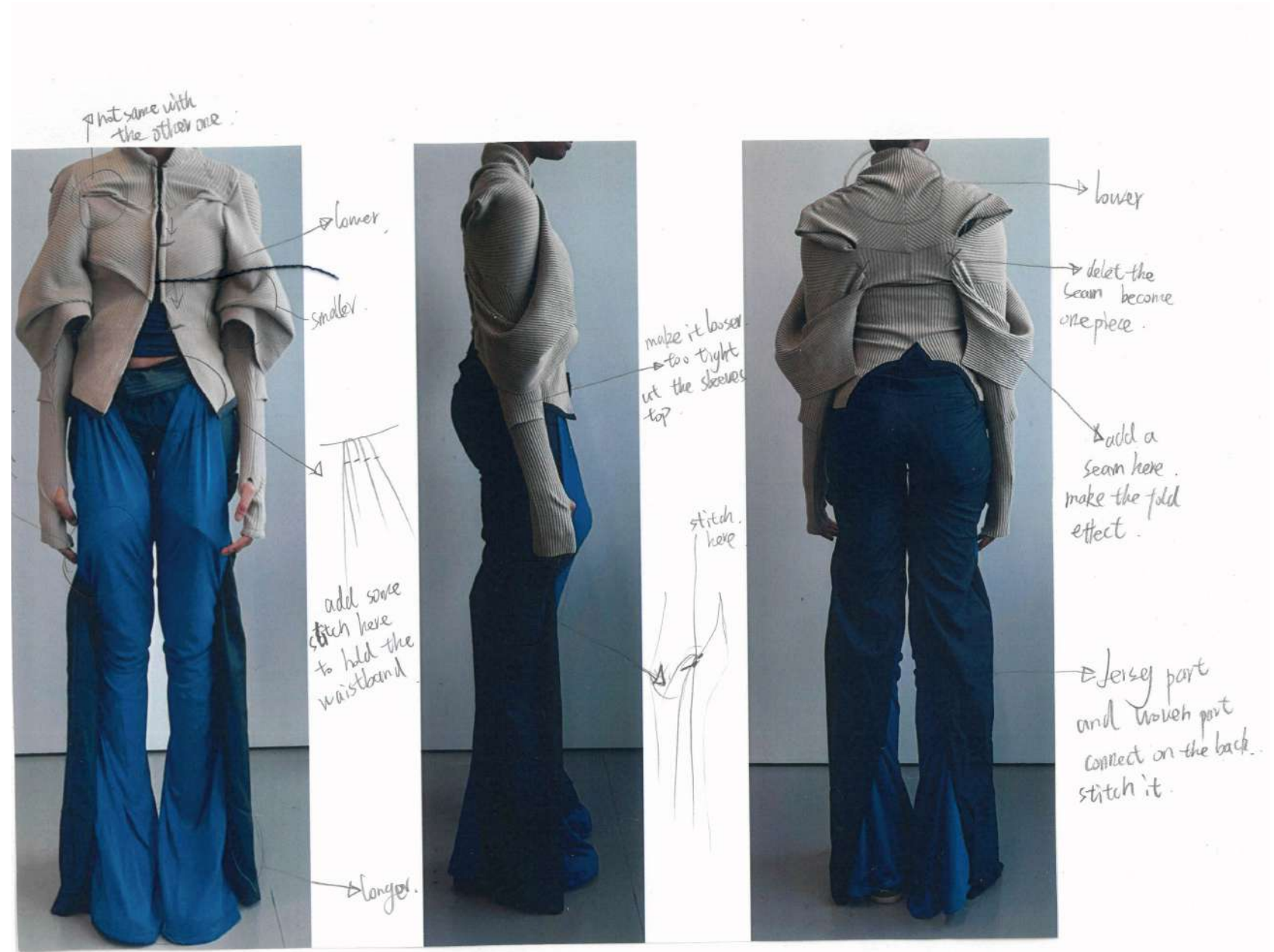
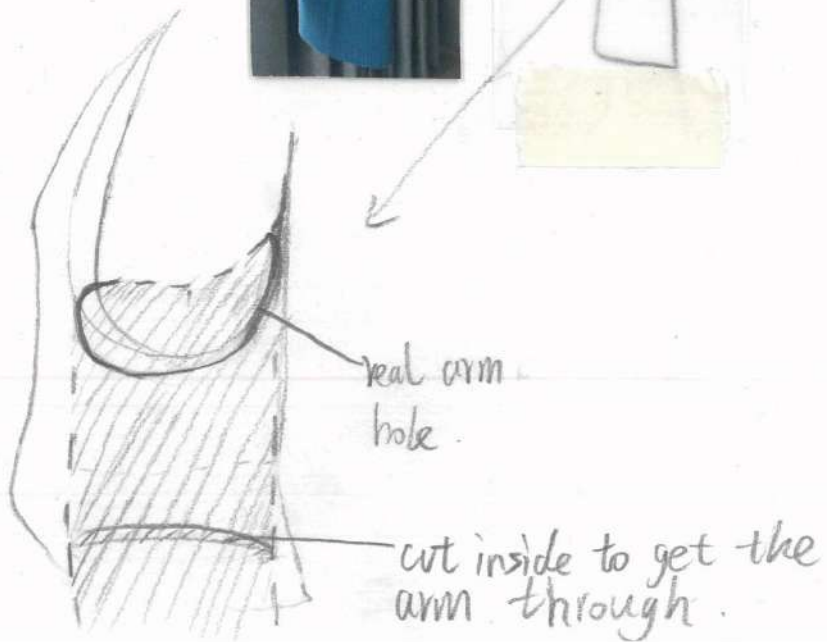
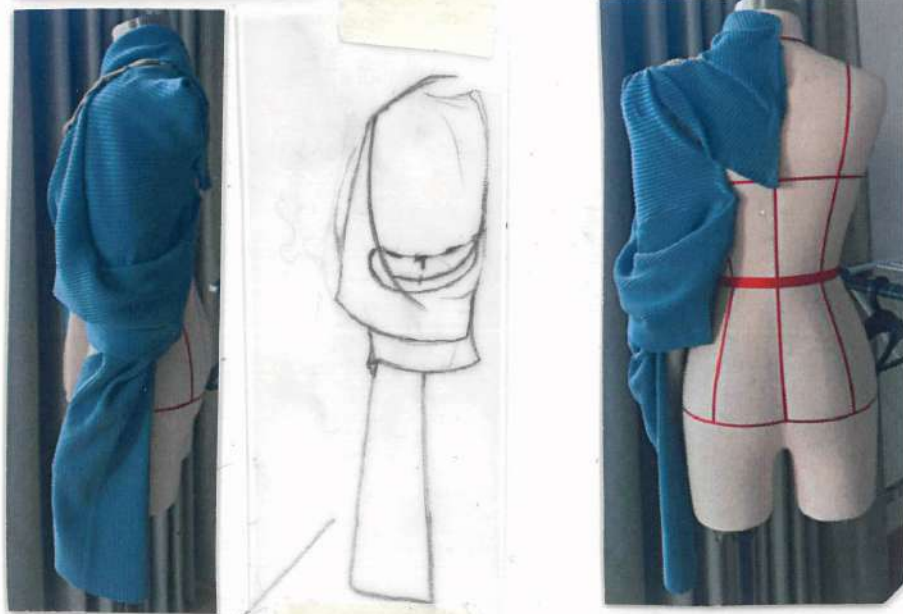
Jersey pant pattern



Back to be one piece jersey. take it easy feeling



put the blue part under
the brown part.
more show the tension
but if sew it, it will
twist the whole
look.



archetype



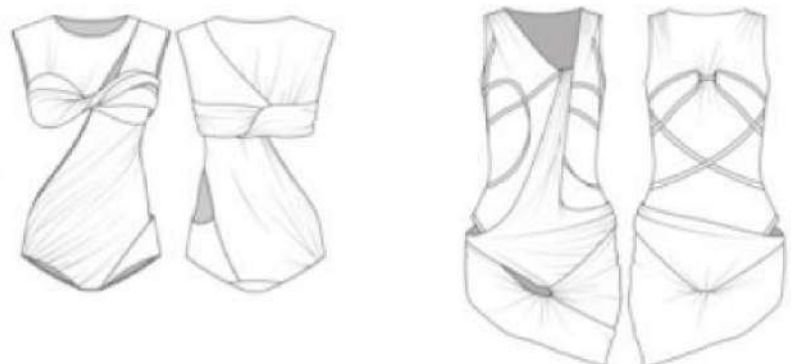


⇒ colorrange

Black, dark brown, navy blue
baby blue, Brownish yellow.



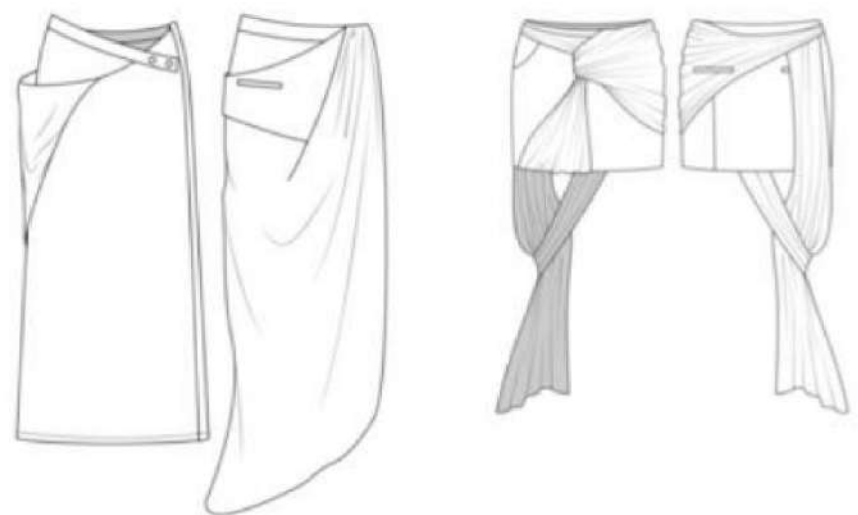
Bodysuit



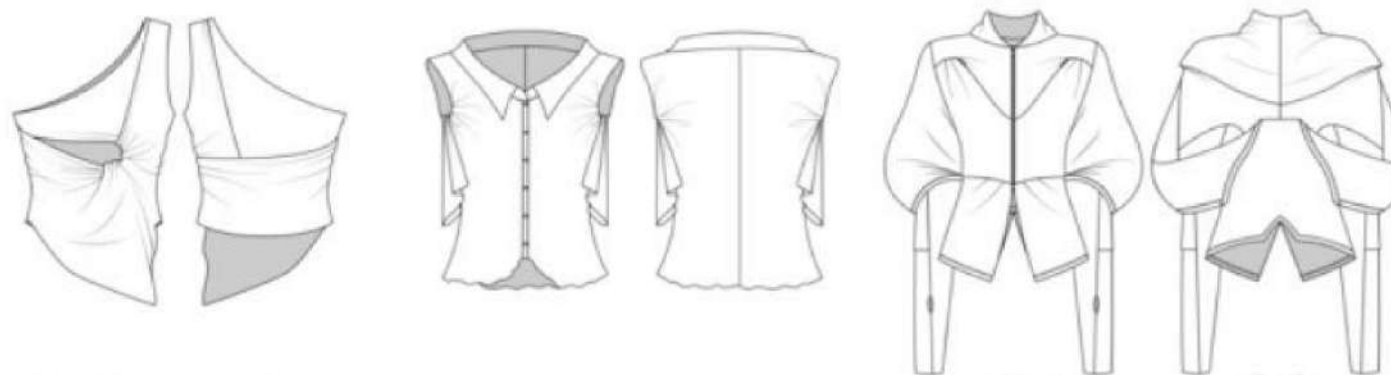
Dress



Skirt



Top



Jacket



Trousers



