



BEATRICE WILSON
GREGOR SAMSA

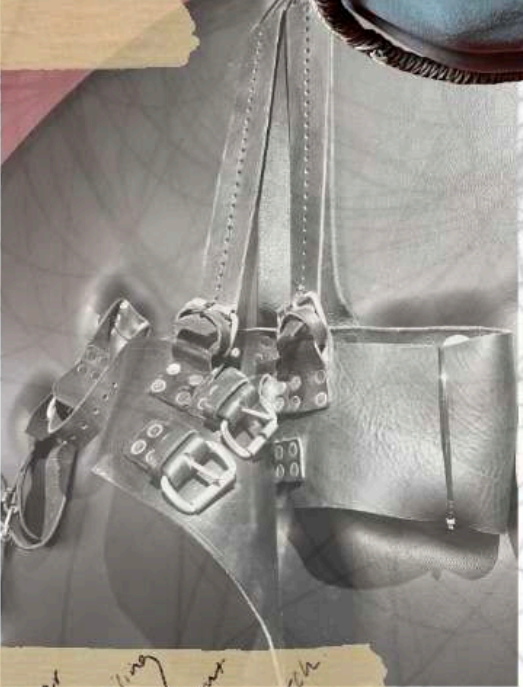
Research - Sex Machine Museum Praha, Prague.



Straps - taming an animal - museum

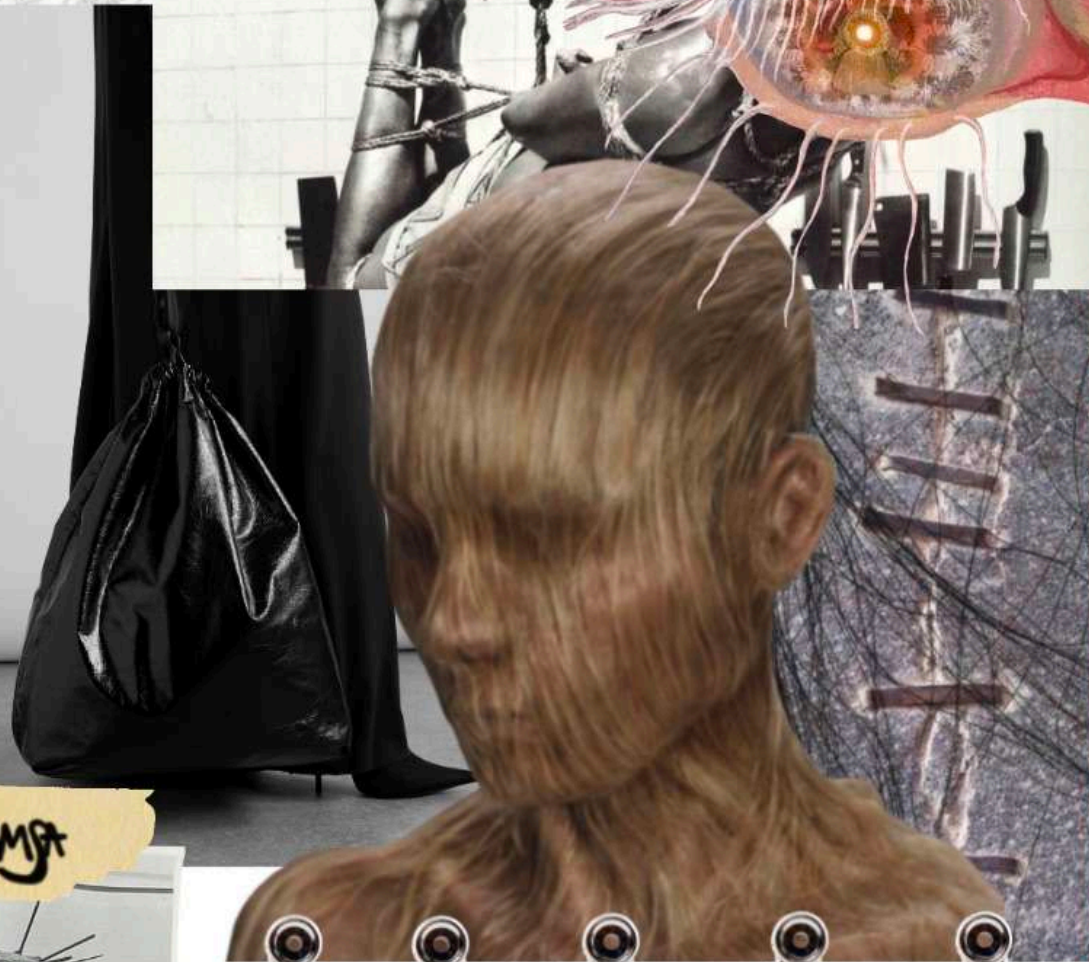
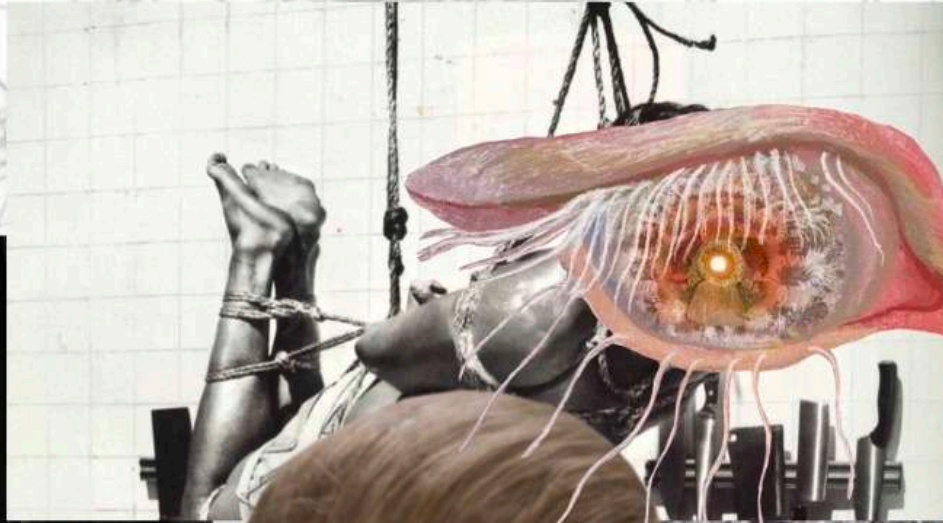


Copied -



Direct Metalworking Research

BEATRICE WILSON
GREGOR SAMSA



BEATRICE WILSON
GREGOR SAMSA

Interchangeable garments via loops.

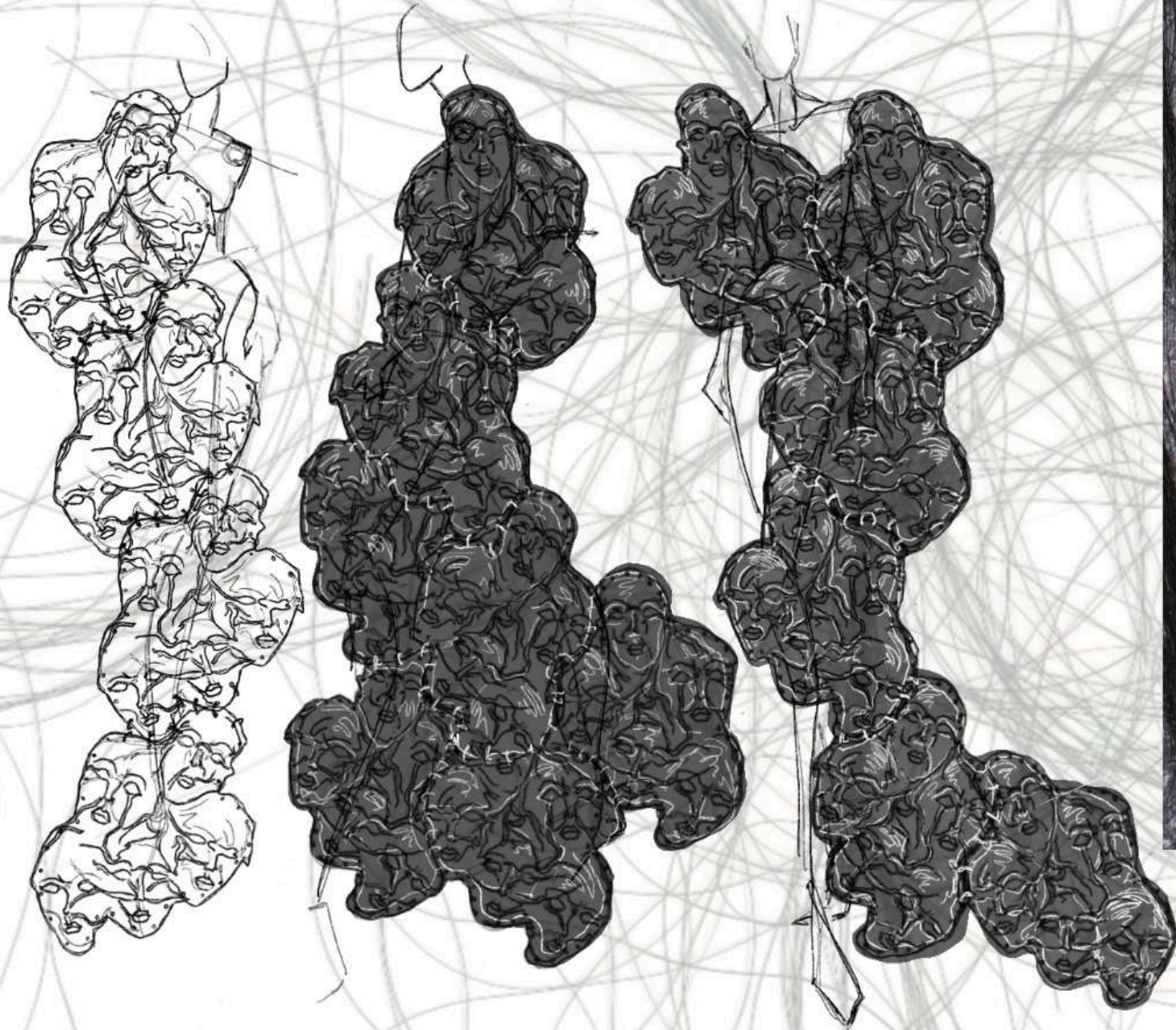


One up or my choice.

Each garment can evolve into a completely new piece via loops + fringe base.

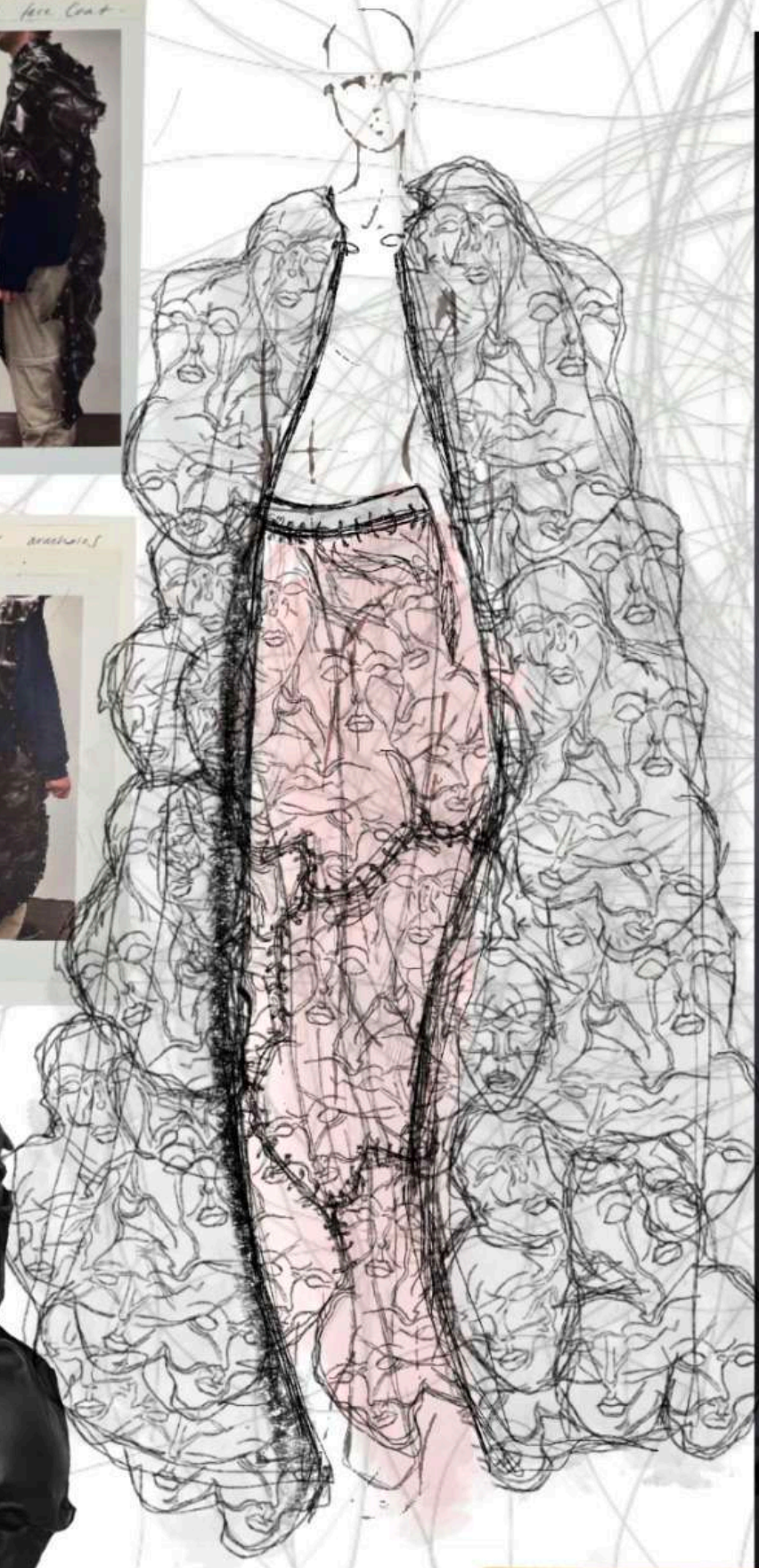
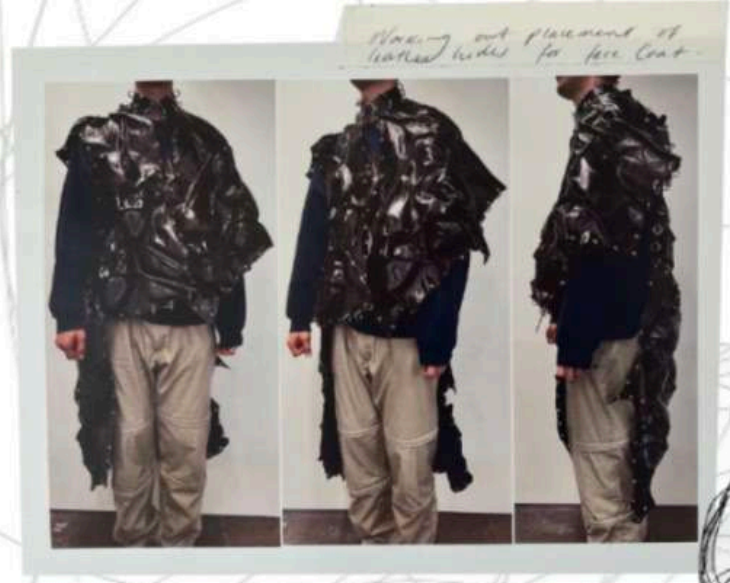


BEATRICE WILSON
GREGOR SAMSA



*Cycloid research from
Joe Machine Museum
in Prague*

BEATRICE WILSON
GREGOR SAMSA



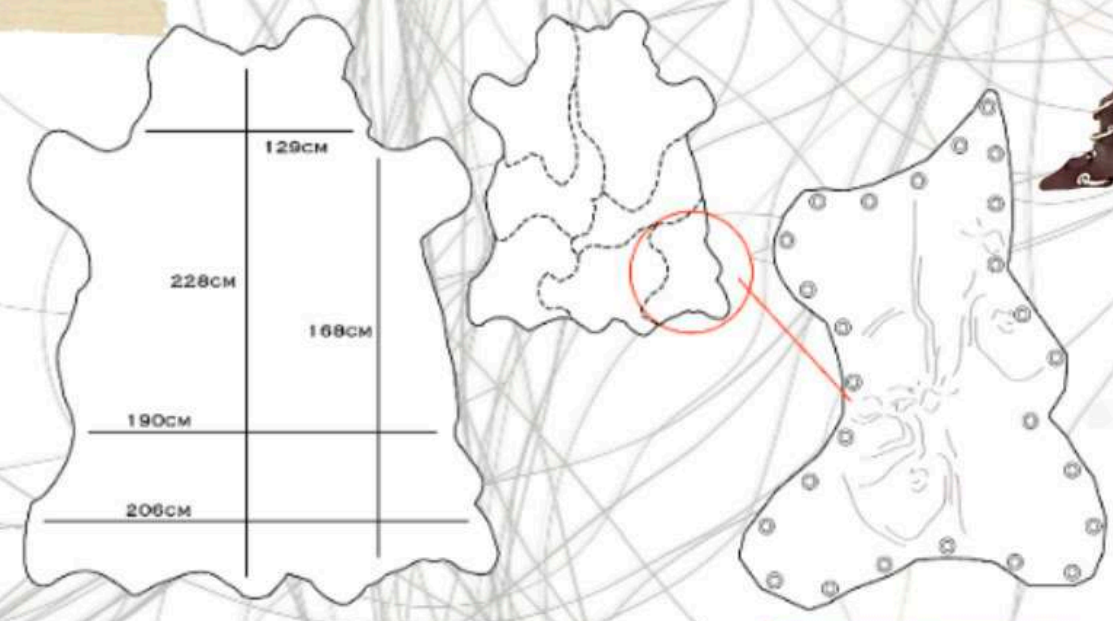
The faces will 'sink' and stretch over time as Gregor Samsa did in Metamorphosis. Can be remodelled later.

BEATRICE WILSON
GREGOR SAMSA

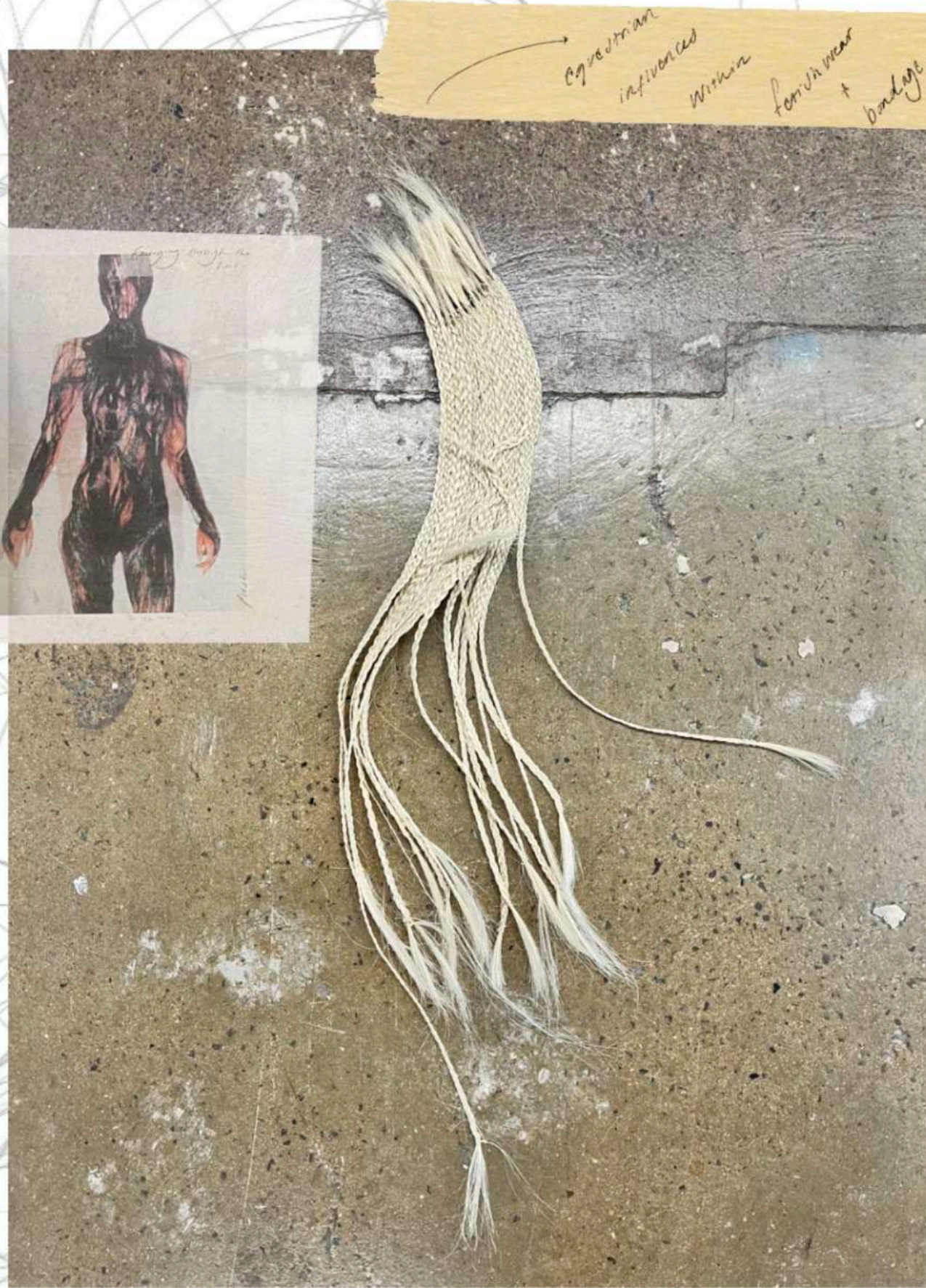


Placement +
Silhouette

Easy to unclip +
re-clip.



BEATRICE WILSON
GREGOR SAMSA



egypthian
influences
within
form wear
+
bondage
-
Restricting

BEATRICE WILSON
GREGOR SAMSA

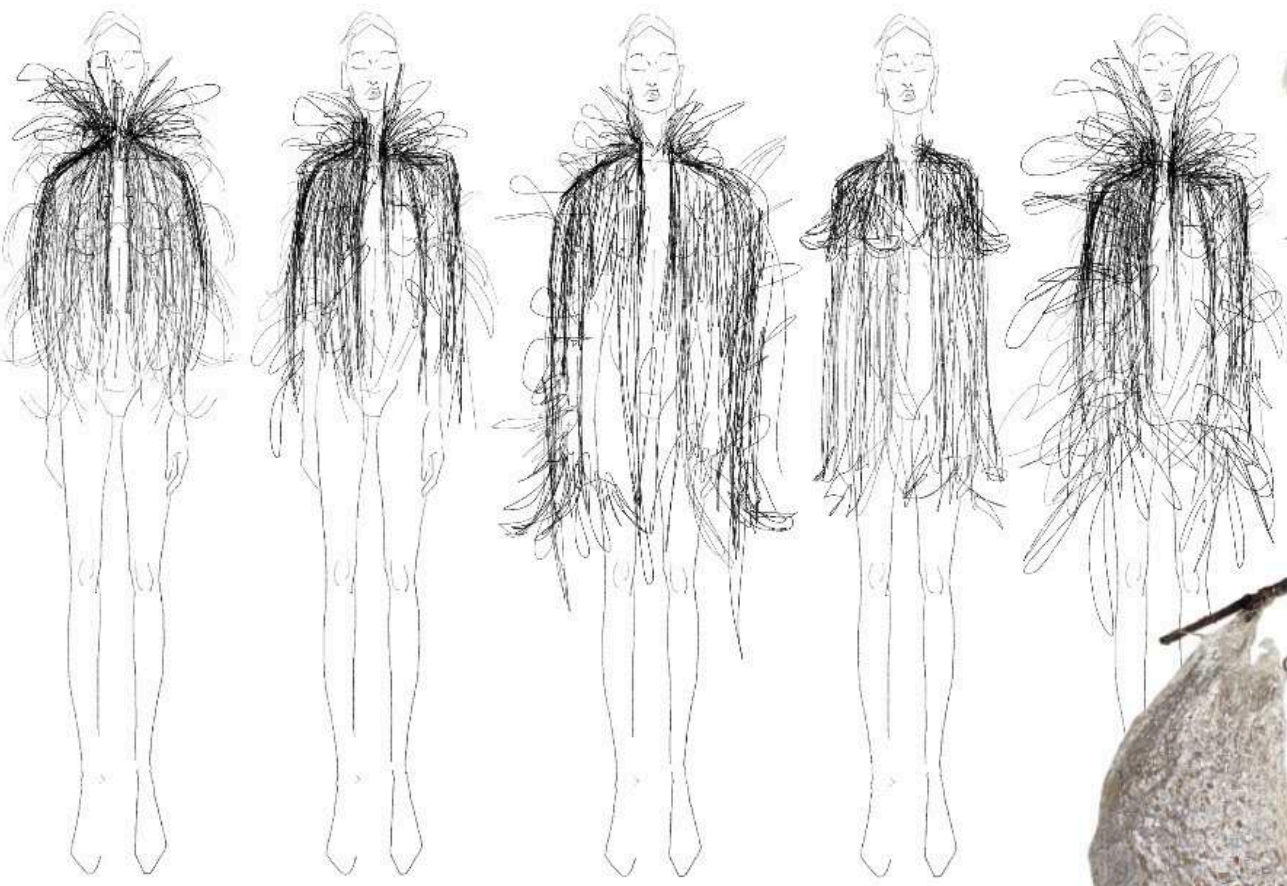
Beit
Moulded
Samples



horse
hair
garments
lined
with
scraps
of
leather -
completely
biodegradable
garments



Morphosis
-
transformation
Adaptation



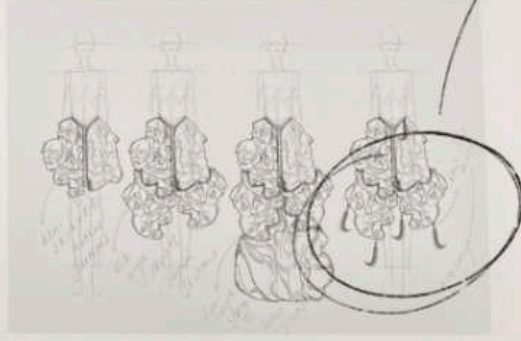
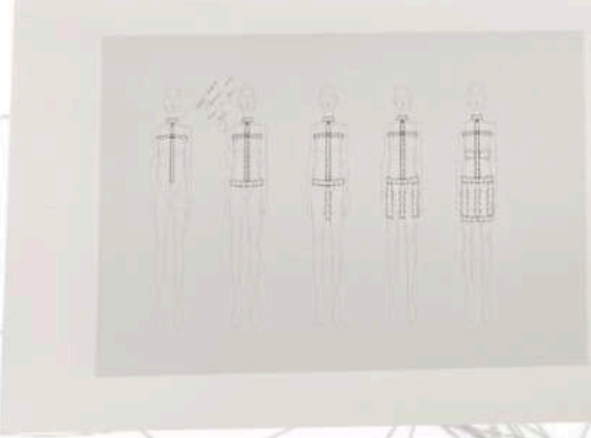
Using
Whale
ribbs -
Zoro
Walt.

BEATRICE WILSON
GREGOR SAMSA



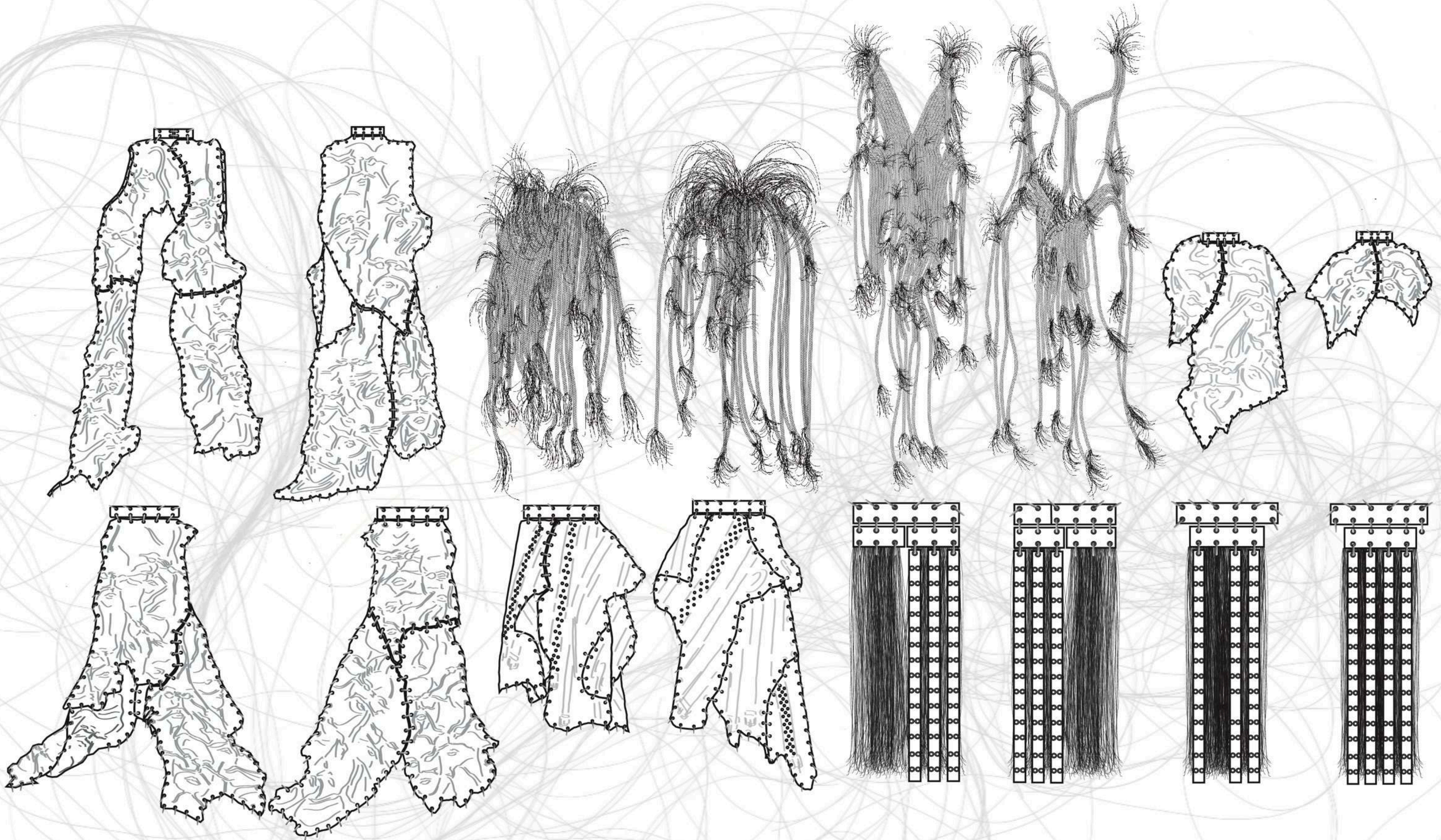
BEATRICE WILSON
GREGOR SAMSA

Accessories made with all waste / leftover product and fabrication.



Accessories / Styling integrated within fabrication & garment.

BEATRICE WILSON
GREGOR SAMSA



BEATRICE WILSON
GREGOR SAMSA



BEATRICE WILSON
GREGOR SAMSA