

Courtney Lockhart
Verne





Reversible



Modular



Geometric

Hexagonal smocking textile



Multi-size consideration

The patterns and textures on Vernes shell have influenced the fabric choice and textile and print in my collection.

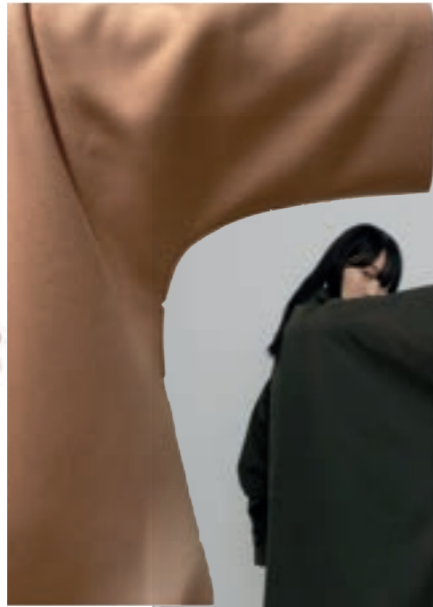


Smocking prep influenced the print pattern

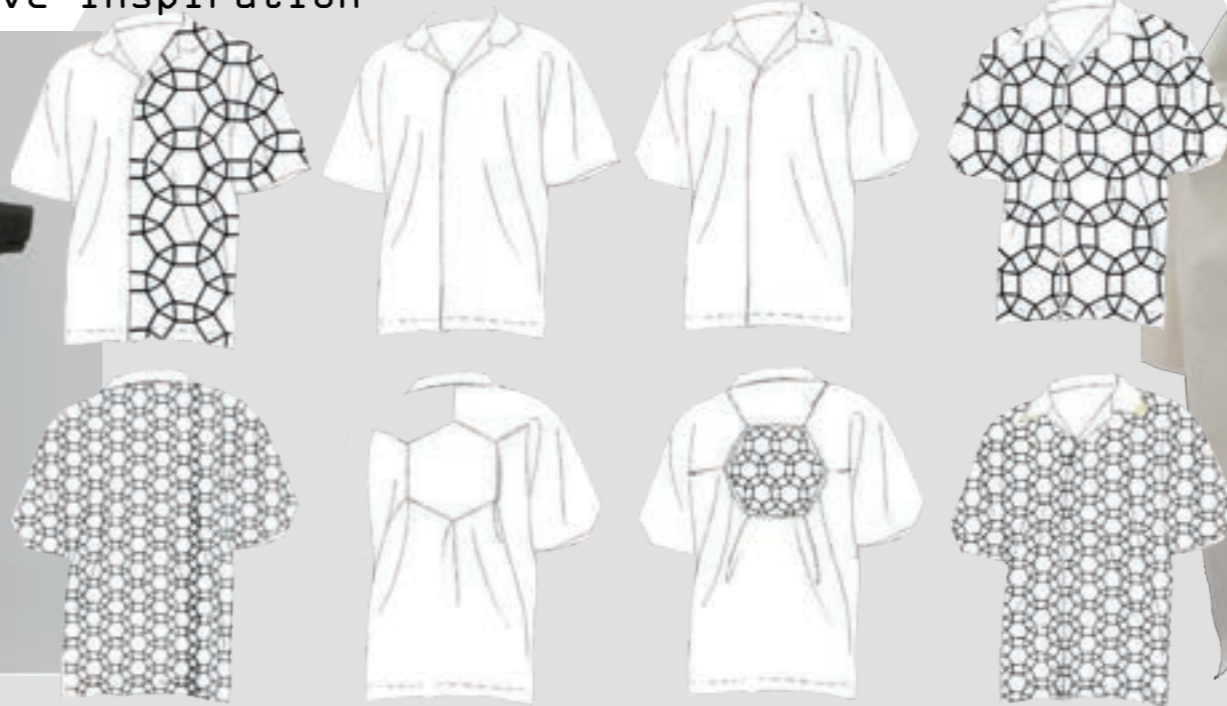
These deadstock materials were dyed, screen printed, and hexagonally smocked, to increase the longevity of the material by making them into garments later on in the process.

Singular smocked hexagon trouser development





Issey Miyake squid coat sleeve inspiration

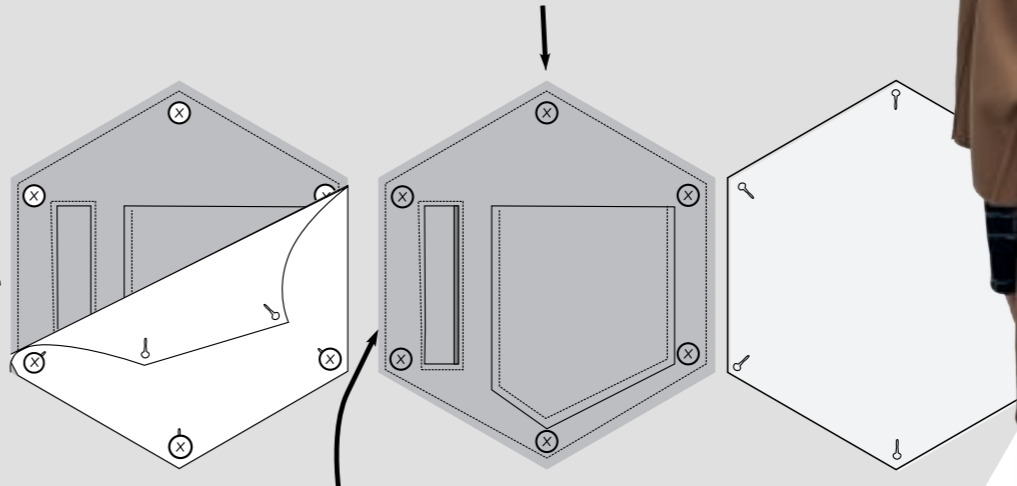
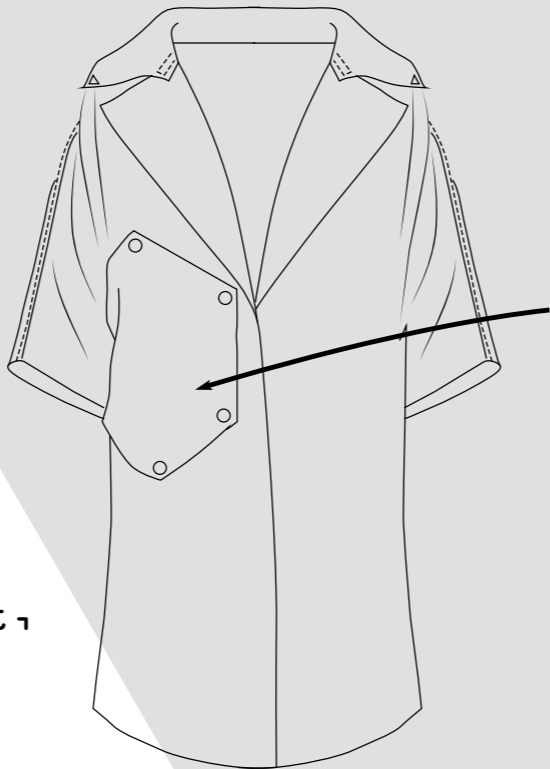


Camel wool, singular hexagonal smocked shacket development



Lorem ipsum

Button 2cm away from the raw edge.



jetted pocket 4cm away from raw edge

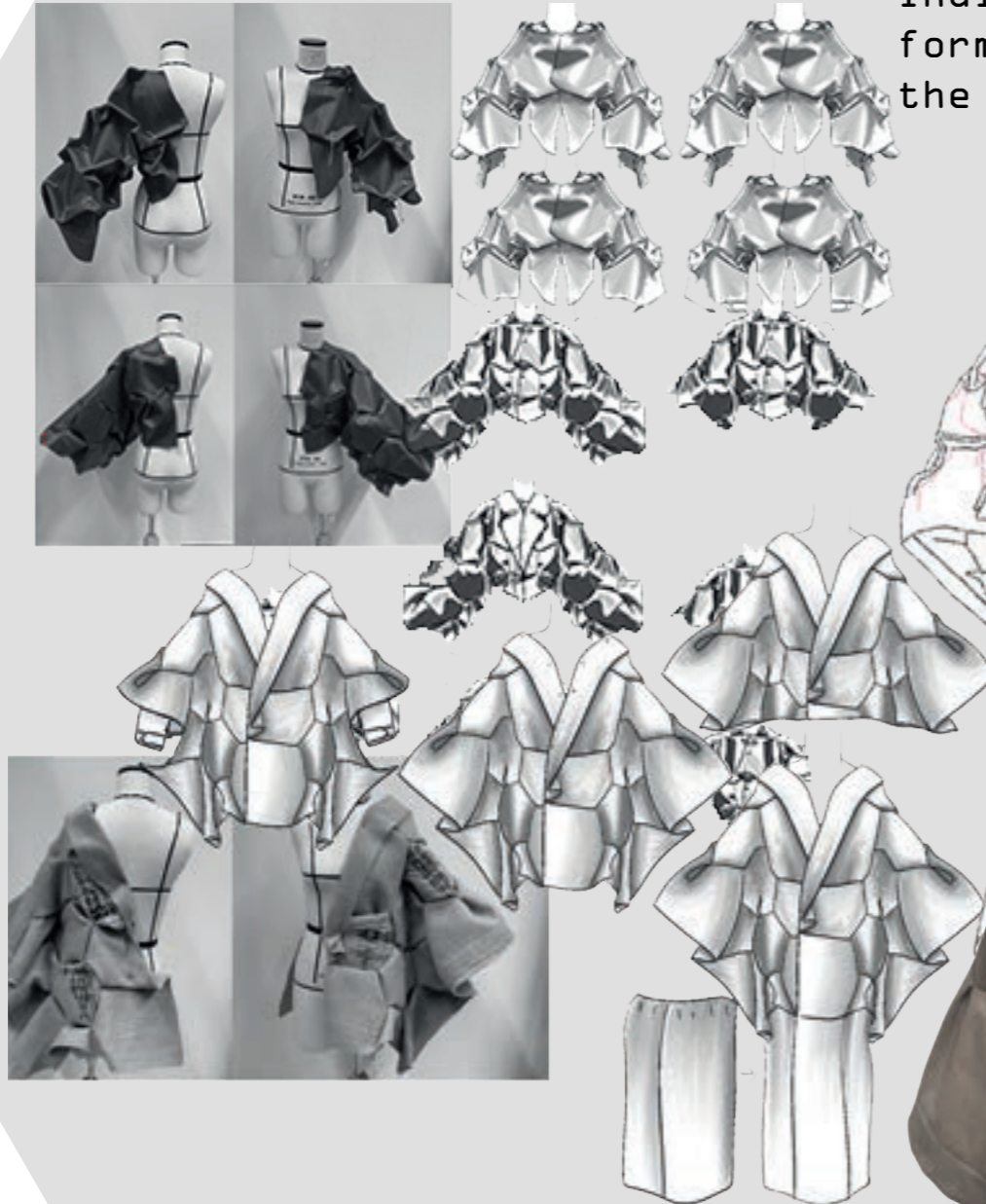


Modular pocket detail development, inspired by Issey Miyake vintage leather jacket pockets



Reversible coat, to increase longevity by giving the consumer variation.

Reversible 4 in one coat development



The top and bottom half of the coat were designed and developed individually, and then formed together to make the bigger coat.

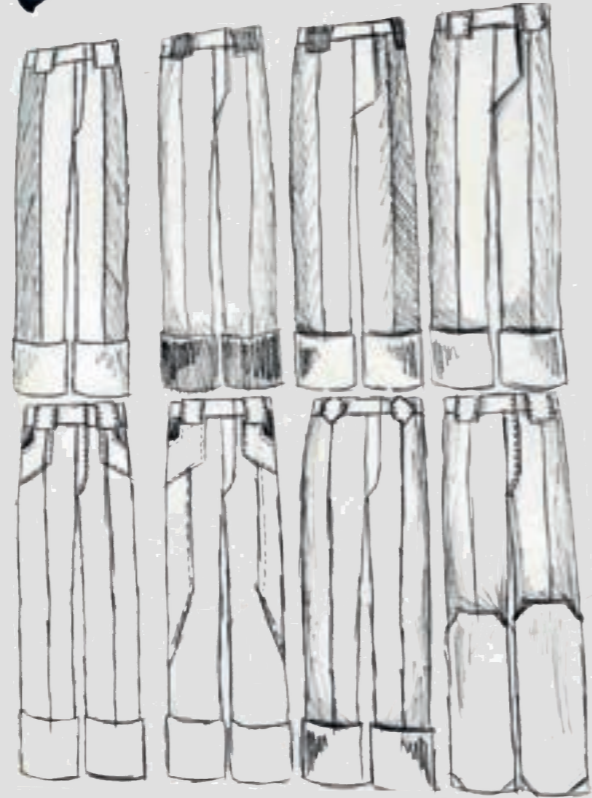
The coats modular aspect can be worn seperatly, and together, to increase the longevity if the garment



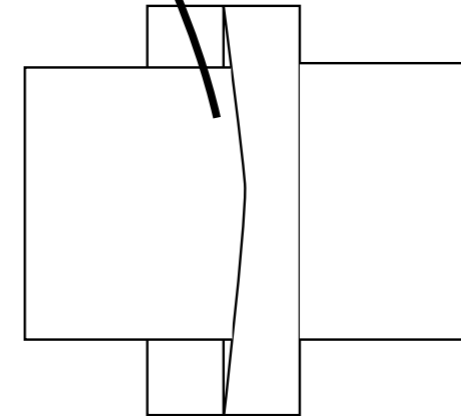
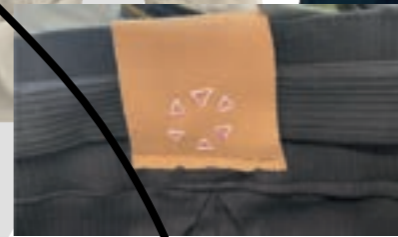
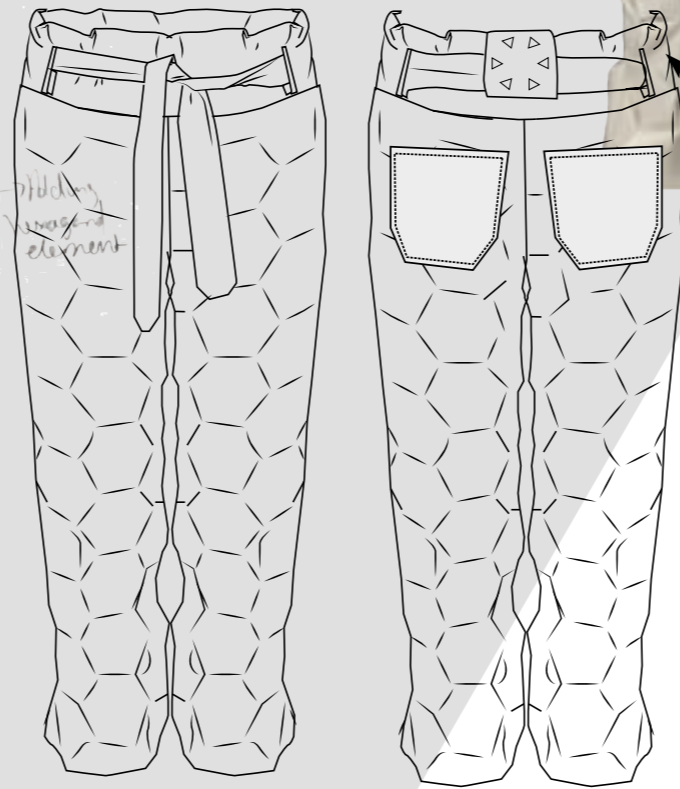
A tie-up fastening for a wider size range



Adding the hexagonal smocked textile development to the initial trouser design



Fully hexagonal smocked trouser development



Jettted opeing for the waist tie to go through. 6cm long and 2cm wide





Backpack development from remade hexagonal smocked jacket.



The fastening of the backpack is influenced by the knotted fastening used on the trousers.



