

# DRAPE TO DRY

@saylestudio  
SAYLESE14000@GMAIL.COM



DRAPE TO DRY PLAYS ON THE ESSENCE OF MY GRADUATE COLLECTION, CHALLENGING A MODERN EXPLORATION INTO DRAPE THROUGH A RANGE OF UNEXPECTED FABRIC CHOICES WITH FUNCTIONAL, CLEAN FINISHES, BRINGING A NEW AESTHETIC INTO THE WORLD OF CREATIVE CUTTING. I AM DRAWN TO THE SUBJECT OF SURREALISM, USING DRAPE TO SHADOW CONTINUOUS, SCULPTURAL FORMS THAT ENCAPSULATE A SENSE OF ATTITUDE FORMING SHELL LIKE, VULNERABLE BUT BOLD GARMENTS, CREATED IN A WAY WHICH CELEBRATES THE CONSTRUCTION OF EACH PIECE. I AIM TO OFFER DRAPE IN THE MEANS OF LUXURY DAYWEAR, CHANNELLING AN EFFORTLESS SENSE OF EASE AND VOLUME INTO THE DAY TO DAY. BY TAKING ONE INITIAL SILHOUETTE, AND EVOLVING THIS SHAPE, RESPONDING DIRECTLY BY LISTENING TO EACH FABRICS UNIQUE CHARACTERISTICS I WAS ABLE TO DISPLAY TO THE FULL POTENTIAL, VOLUME AND EASE.



EMMA SAYLES  
Bath School of Art & Design



Sayles	Studio
<b>DRAPE TO DRY</b> THE GRADUATES SERVICE	
London, England. _____	
Miss <i>Emma Sayles</i>	
Contact <i>sayles14000@gmail.com</i>	
Quan.	Comp.
	SHEER SUNSHINE YELLOW POLY LINING
	SUNSHINE YELLOW PIGS SUEDE
	MIDNIGHT FLOCKED DENIM
	MIDNIGHT MOLESKIN
	AMBER GOATS DOUBLE FACED SUEDE
	SHEER APEROL POLY LINING
	AMBER / BROWN DOUBLE FACED WOOL
	BLACK COATED COTTON
All Claims and Returned Goods MUST be accompanied by this bill	



YELLOW PEAR P 11-0623 TPG	DELPHINIUM BLUE P 16-4319 TCX	BLAZING ORANGE P 15-1160 TPG	BRANDY BROWN P 18-1541 TCX	BLACK BEAUTY P 19-3911 TPG
PASSION FRUIT P 14-0750 TCX	MOONLIT OCEAN P 19-4122 TPG	MARITIME BLUE P 19-3831 TCX	DESERT PALM P 19-0815 TCX	

SCULPTURAL  
 OPULENT  
 CLEAN  
 FLUID  
 BOLD



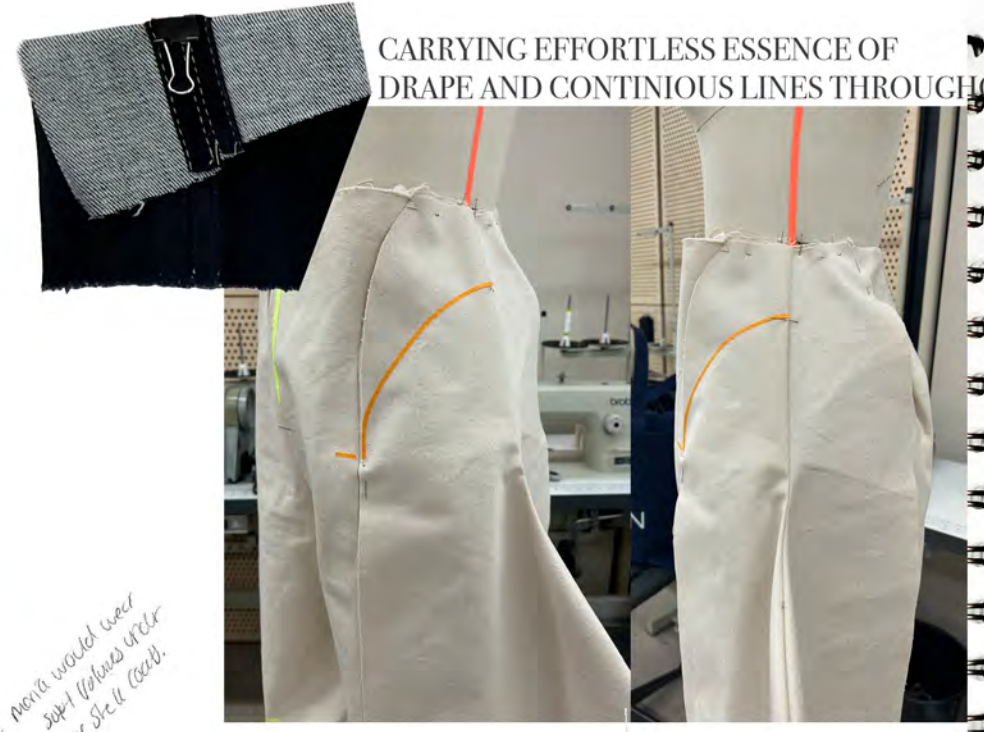




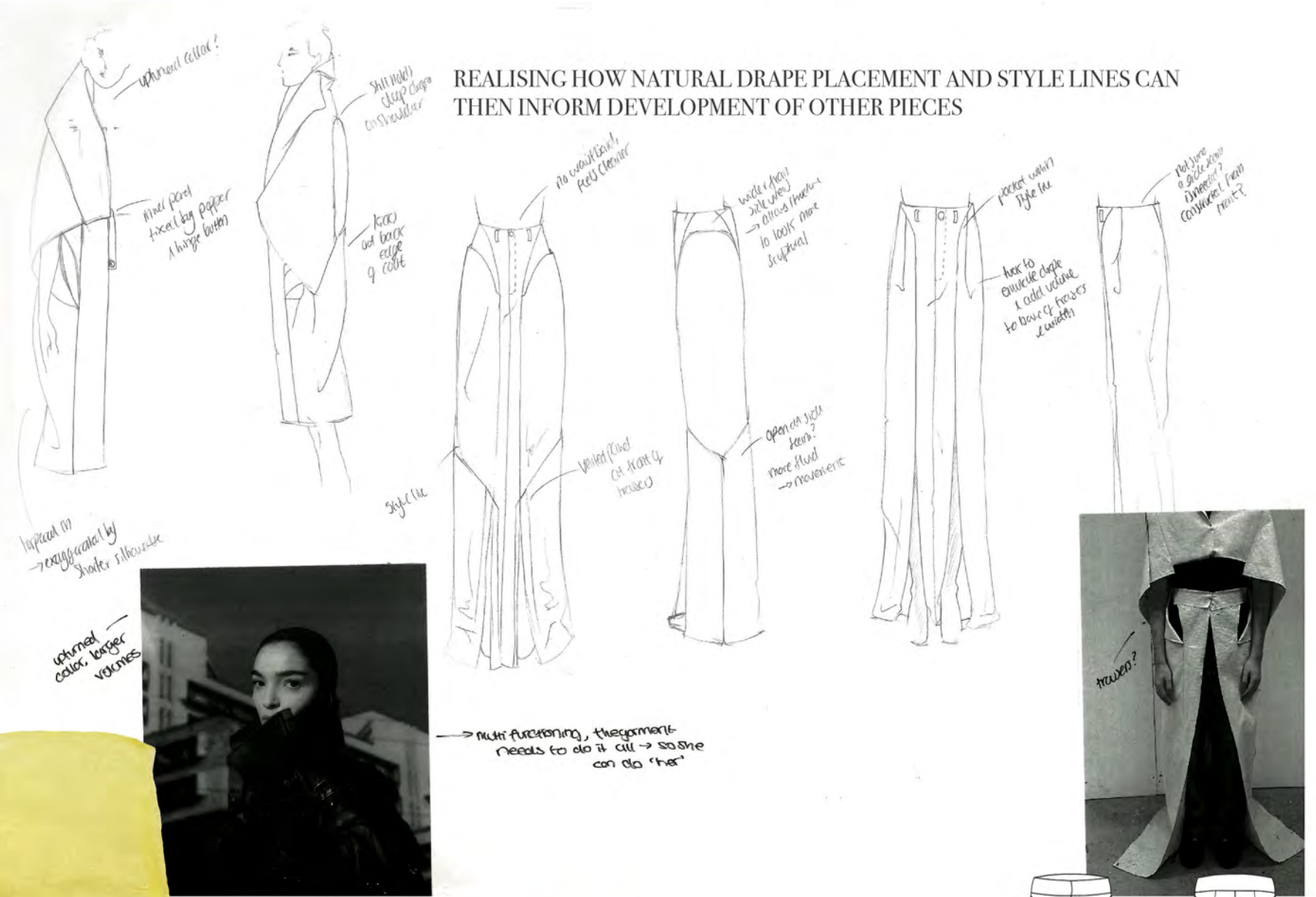
TESTING SEAMS AND FINISHES REPRESENTATIVE OF CLASSIC DENIM/DAYWEAR PIECES



CARRYING EFFORTLESS ESSENCE OF DRAPE AND CONTINUOUS LINES THROUGHOUT



REALISING HOW NATURAL DRAPE PLACEMENT AND STYLE LINES CAN THEN INFORM DEVELOPMENT OF OTHER PIECES



NATURAL DRAPE INFORMING OPENINGS FOR POCKETS AND FURTHER GARMENT DEVELOPMENT



DYE TRIALS TO TONALLY COLOUR MATCH POCKET BAG LININGS TO OUTER FABRIC (SUEDE)

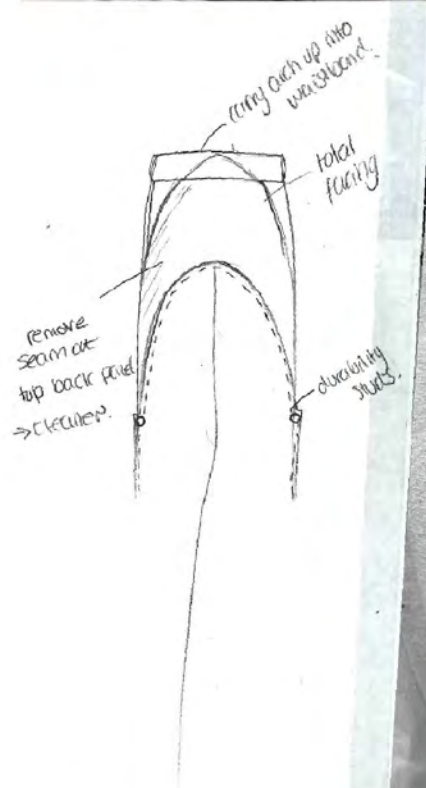


TESTING MODERN, CLEAN WAYS OF FINISHING SEAMS AND DARTS TO CELEBRATE THE FABRIC COMPOSITION FULLY





SOFT BOWING REF IMAGE, INTENDING TO CAPTURE THE VOLUME AND SHELL LIKE ATTITUDE ENCASED IN THESE IMAGES



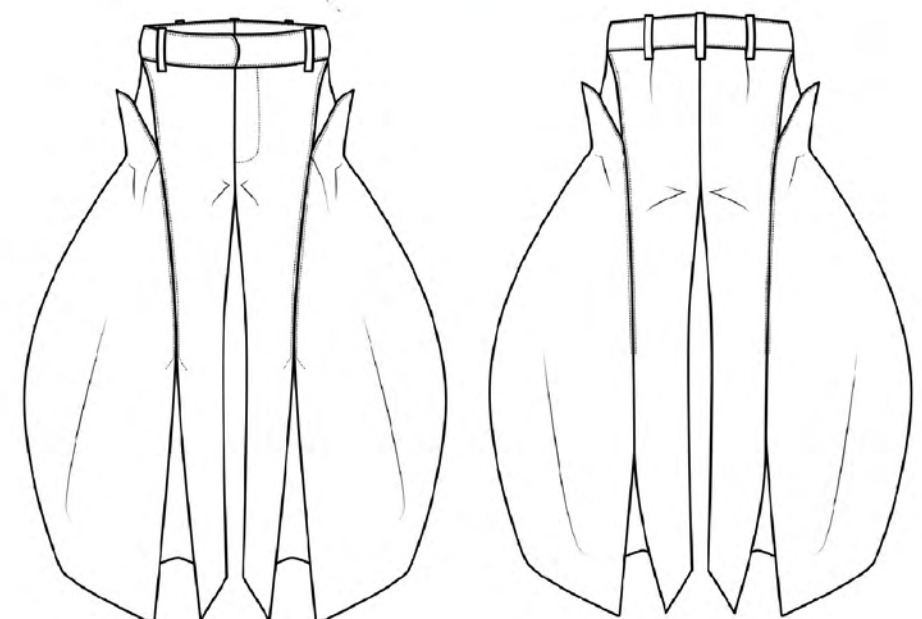
USING TAPE TO TRIAL AND MARK OUT POTENTIAL POCKET PLACEMENTS



ADDITIONAL DRAPE TRIAL CUT ON THE BIAS. DIDNT WORK - LEG OPENED AND HAD TOO MUCH VOLUME AT THE BASE



ADDED POCKET PROTOTYPE, REMOVED SIDE SEAM FROM INNER POCKET FACING - CLEANER BETTER RESPONSE TO THE OVERALL VIBE



DECIDED AGAINST CUTTING ON THE BIAS - STRETCH WOULD HAVE INTERFERED WITH THE NATURAL SILHOUETTE OF THE SIDE SEAMS



TWIN TOPSTITCHING NEEDED TO GIVE STRUCTURE TO DRAPED SIDE SECTION OF LEG









CONSIDERING DIFFERENT FABRIC RESPONSES TO THE DRAPE - SLEEVE IN SUEDE WOULD ADD TOO MUCH BULK



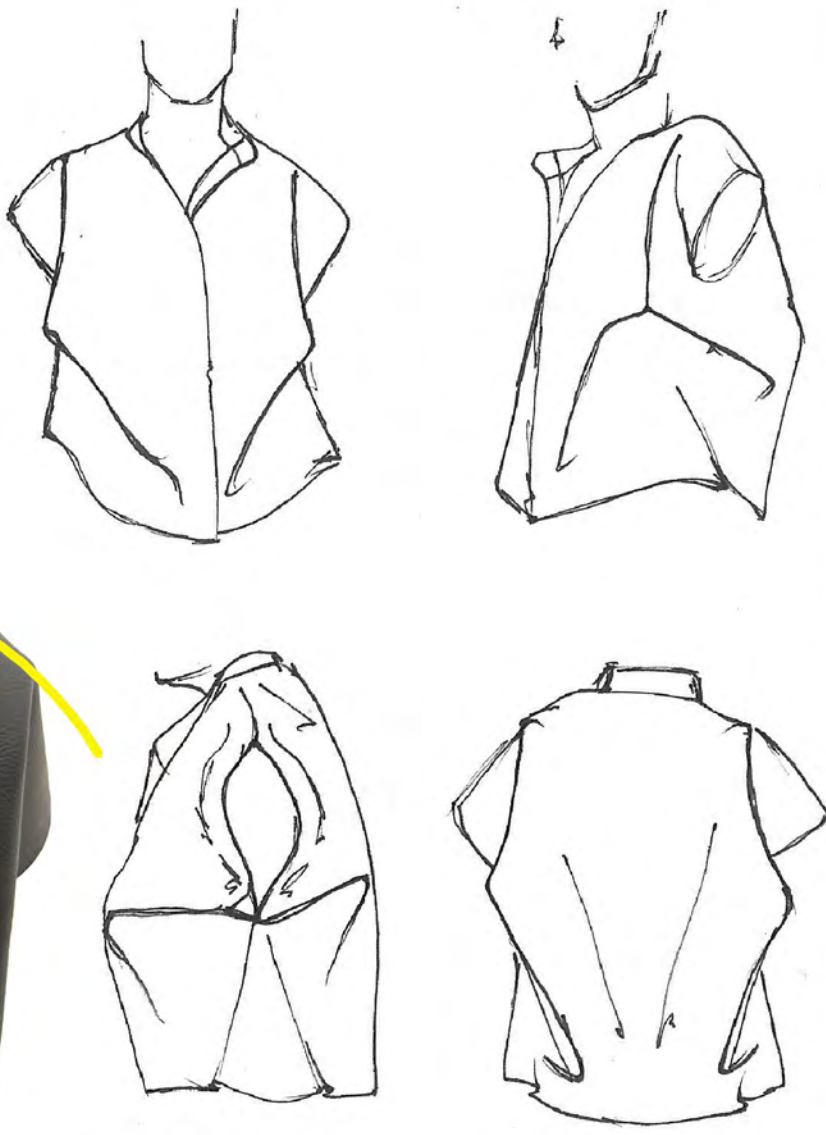
ACHIEVING THE BEST SHAPE WITHOUT OVERWORKING THE SUEDE, FINDING A BALANCE OF CONTINUATION

HIGH STANDING, DOUBLE SUEDE, RAW EDGE COLLAR, REDUCES BULK AND ADDS SHELL LIKE STRUCTURE THROUGHOUT THE PIECE

PRESSED OPEN AND GLUED SEAMS, ENCASING ATTITUDE CAPTURED BEST THROUGH THIS AND GIVES WEARER AN APPRECIATION TO THE CONSTRUCTION OF THE PIECE



LOWERING DRAPE POINT TO FURTHER RELAX THE SHOULDERS

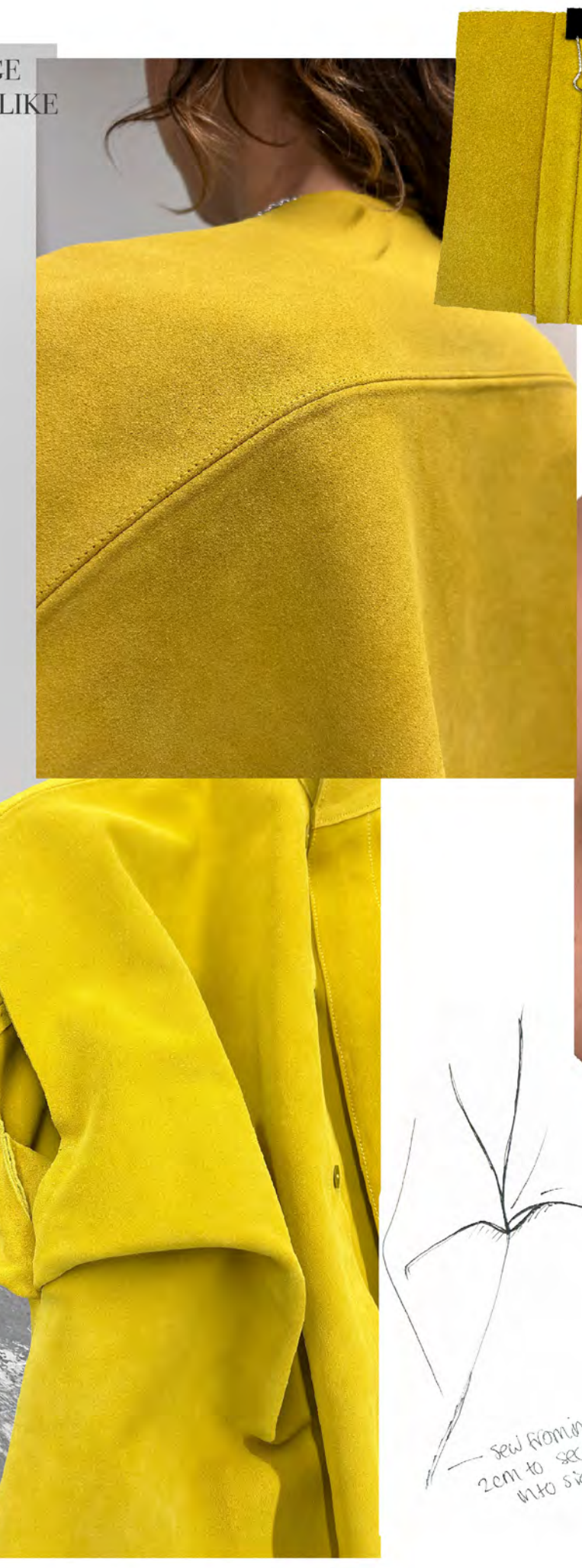


.LINE ADDED TO GIVE PUSH OUT ON SHOULDER BLADES

SET BACK SHOULDER SEAM - RECTANGLE LAY PLAN, SHAPE COMES ENTIRELY FROM DRAPE ANCHOR POINT



SINGLE LINE TOP STITCHING ABOVE YOKE, REINFORCES STRUCTURE IN THE BACK OF THE SHIRT, SHARPENS DRAPE.



DRAPE ANCHOR POINT UNDER THE ARMS, EXAGGERATES SLOUCHY SHIRT LIKE SILHOUETTE WITHOUT OVERWORKING THE FABRIC

