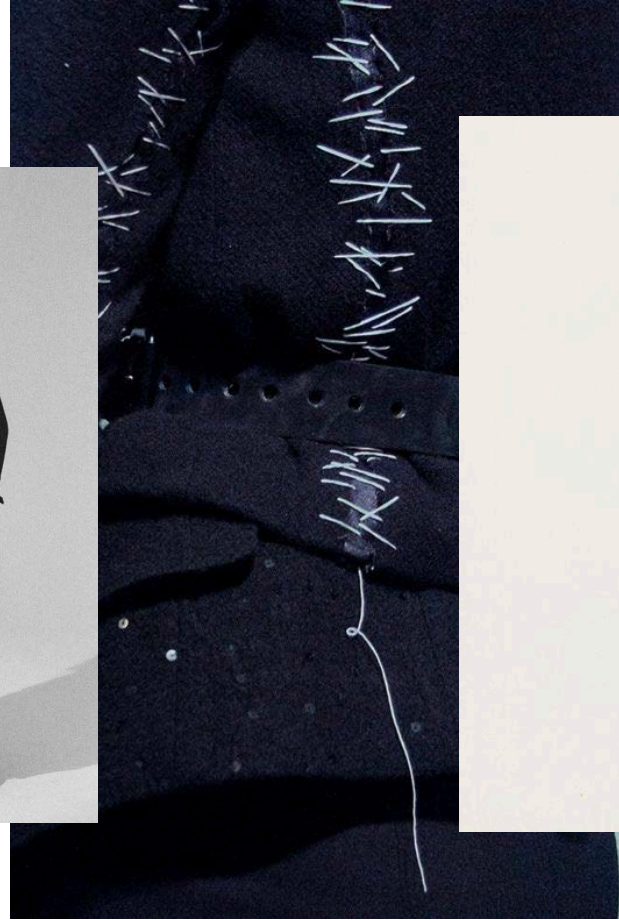


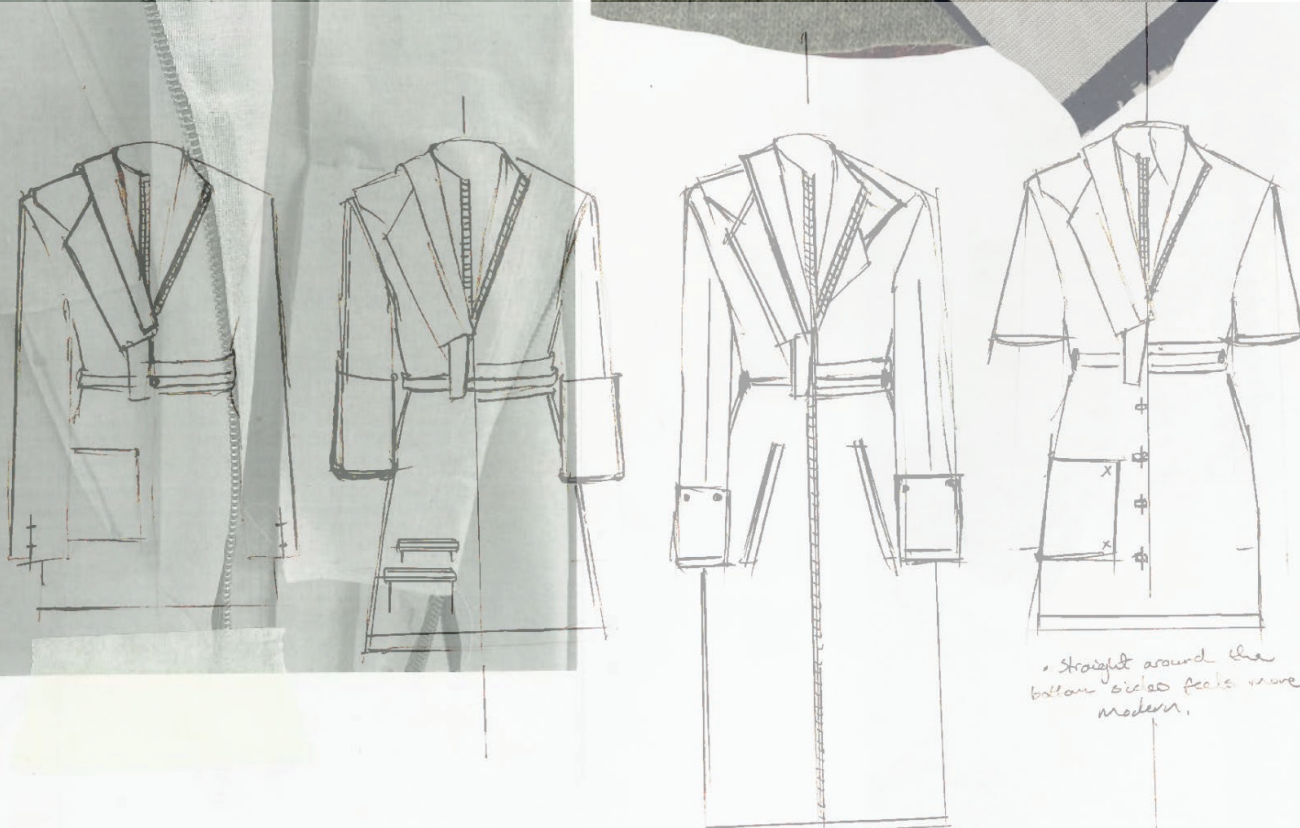
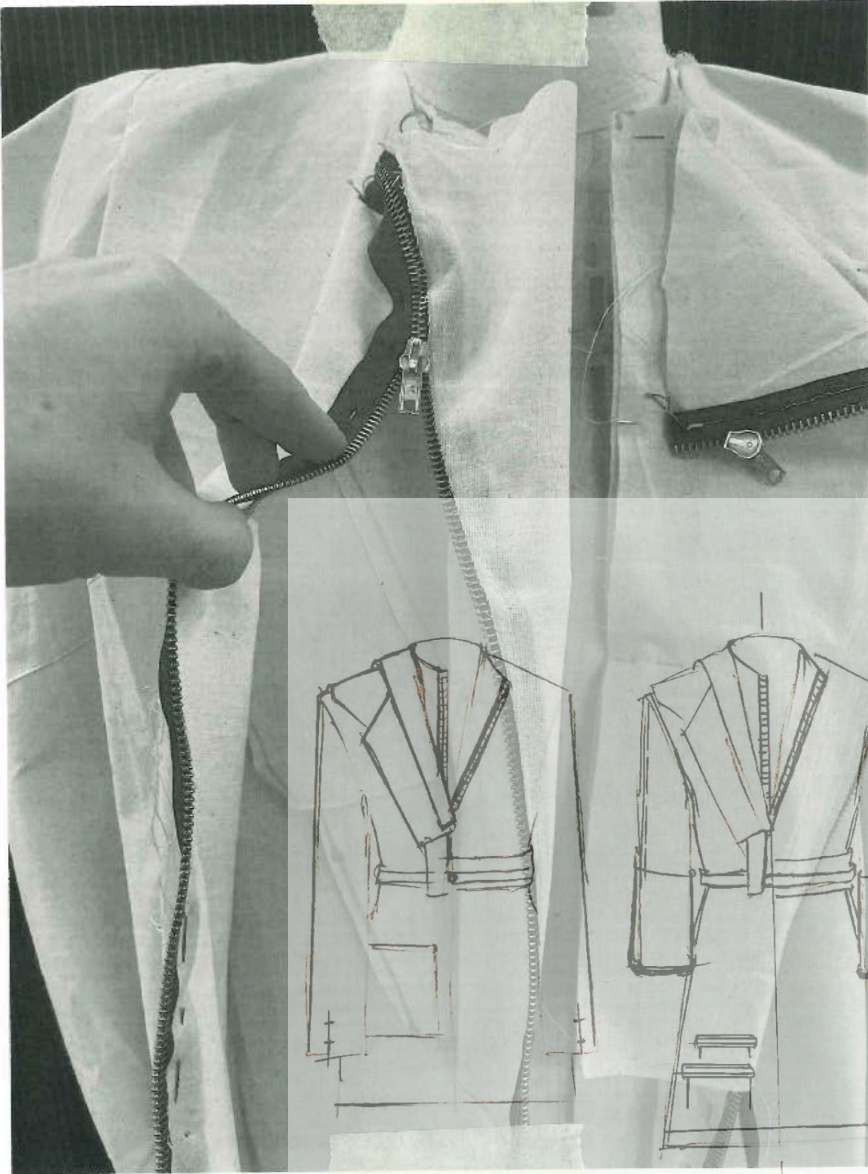
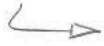


HYSEN

Graduate Capsule Collection



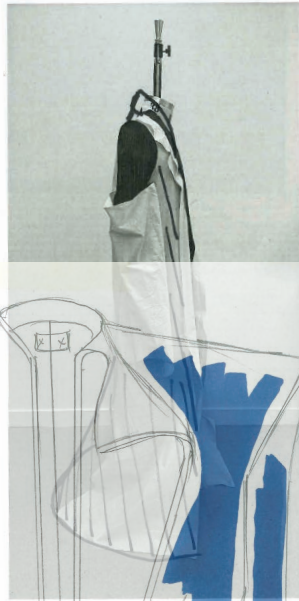
Squared off shoulders!



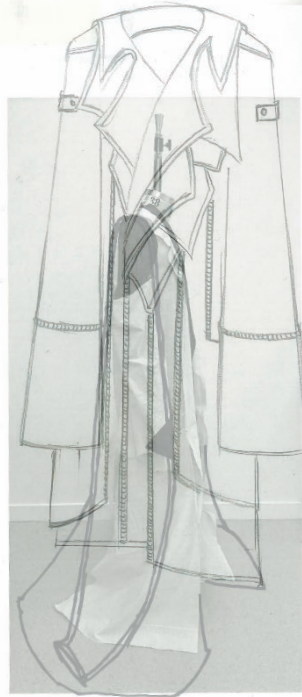
• Straight around the bottom sides feels more modern.

• What if lapels all zipped
look into

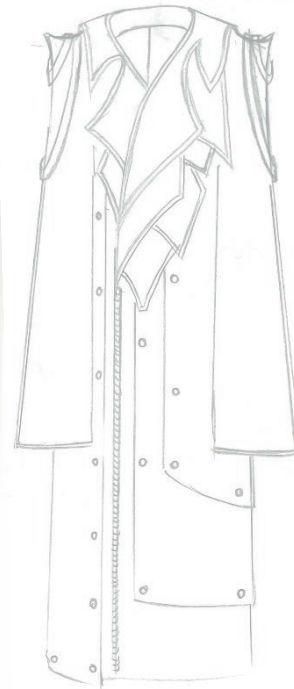
Initially Exploring techniques for adaptability, 'How can I transform the jacket into something new?'



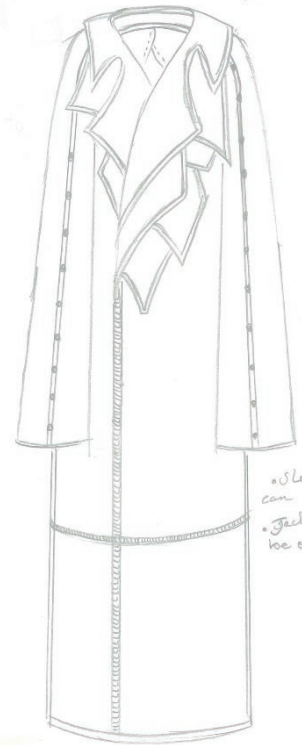
• with a really long Cotton T shirt underneath the two layers



• like inherited shirt reference!



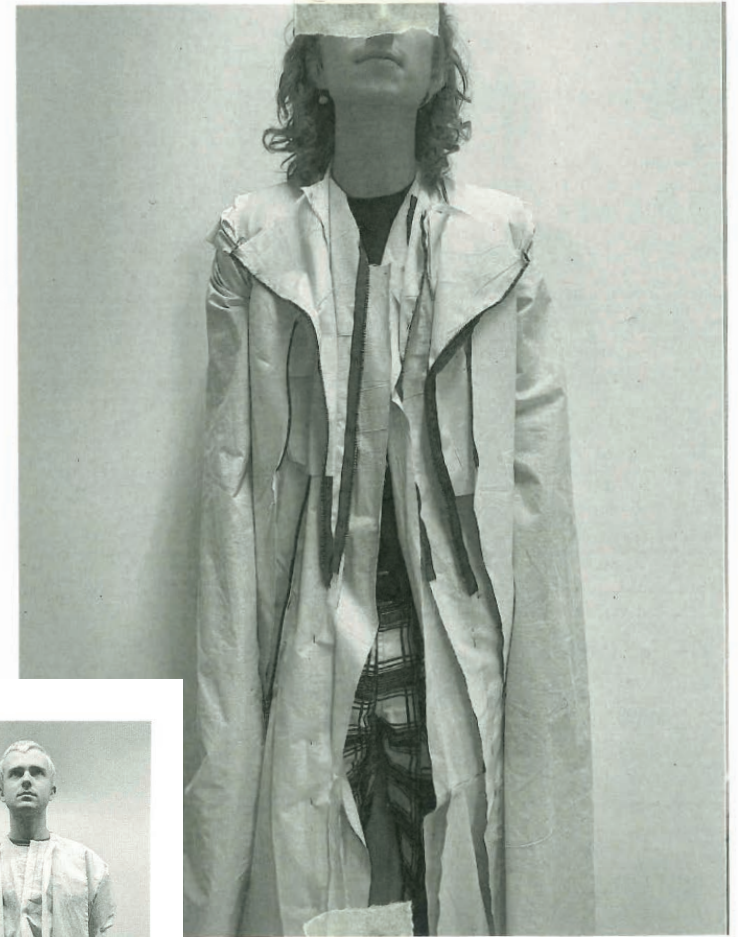
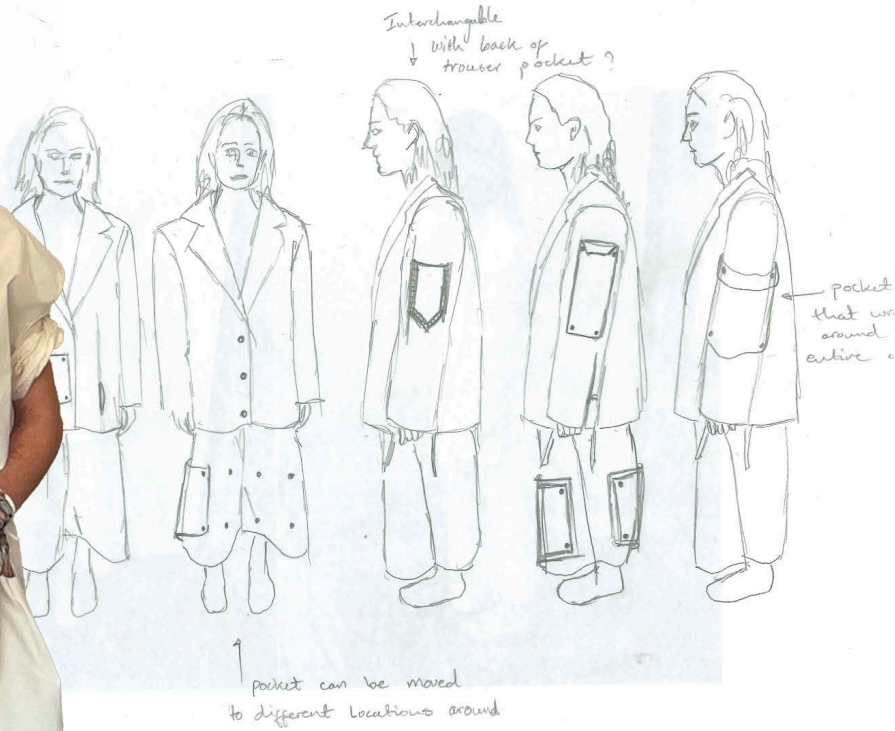
• I like the idea of a 'hard' outer shell like this jacket



• sleeves can unbutton
• jacket can be shortened.

Started to layer toiles as well as previous garments which I had found at charity shops for inspiration regarding inheritance.

Research and development
of adaptability in the forms of interchangeable layers and pockets



Focusing on adaptability
in a new light with layering - layering lapels,
- pockets



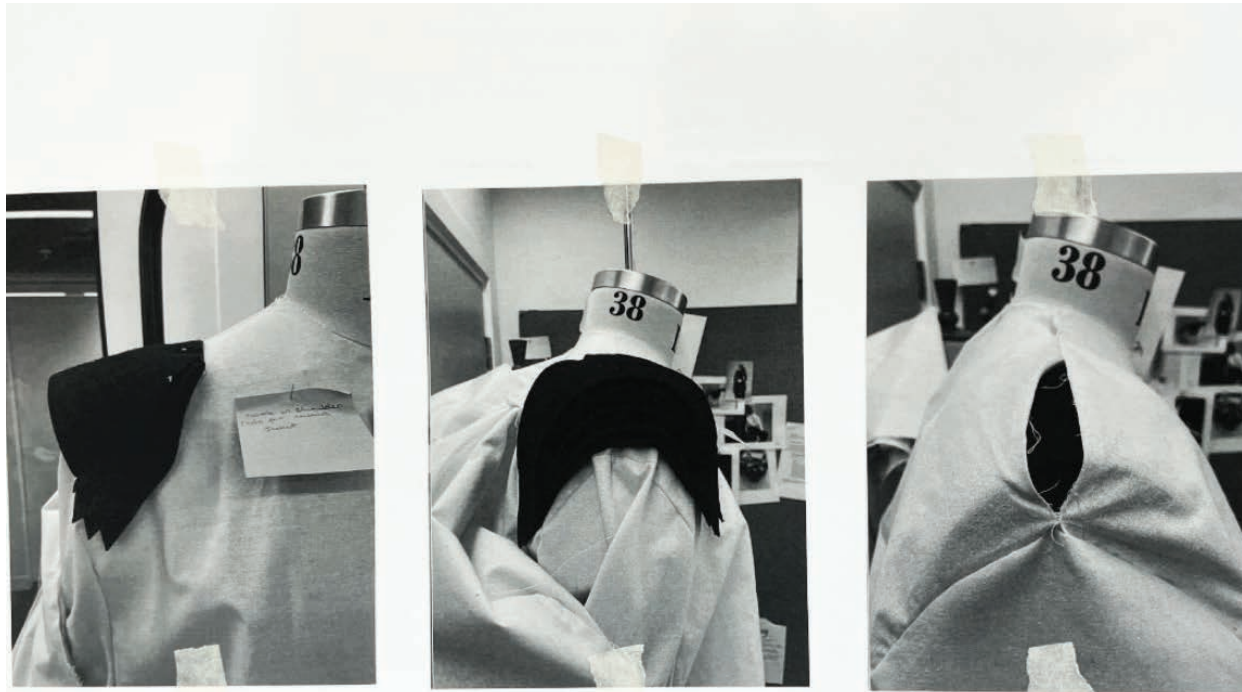
• If all the edges have zips
↳ allowing them
to all connect
makes 2 lapels



Further exploring the idea of working
with zips in non traditional formats.

↑
garments have lots of
poppers so that different
pockets can be added/
Interchanged

Looking at different shoulder pads, editing original patterns and toiles to fit larger shoulder, allowing for shoulder roll.



• working on what height I want on the shoulders.
↳ I like having really massive shoulders to emphasize this idea of dressing up as a child

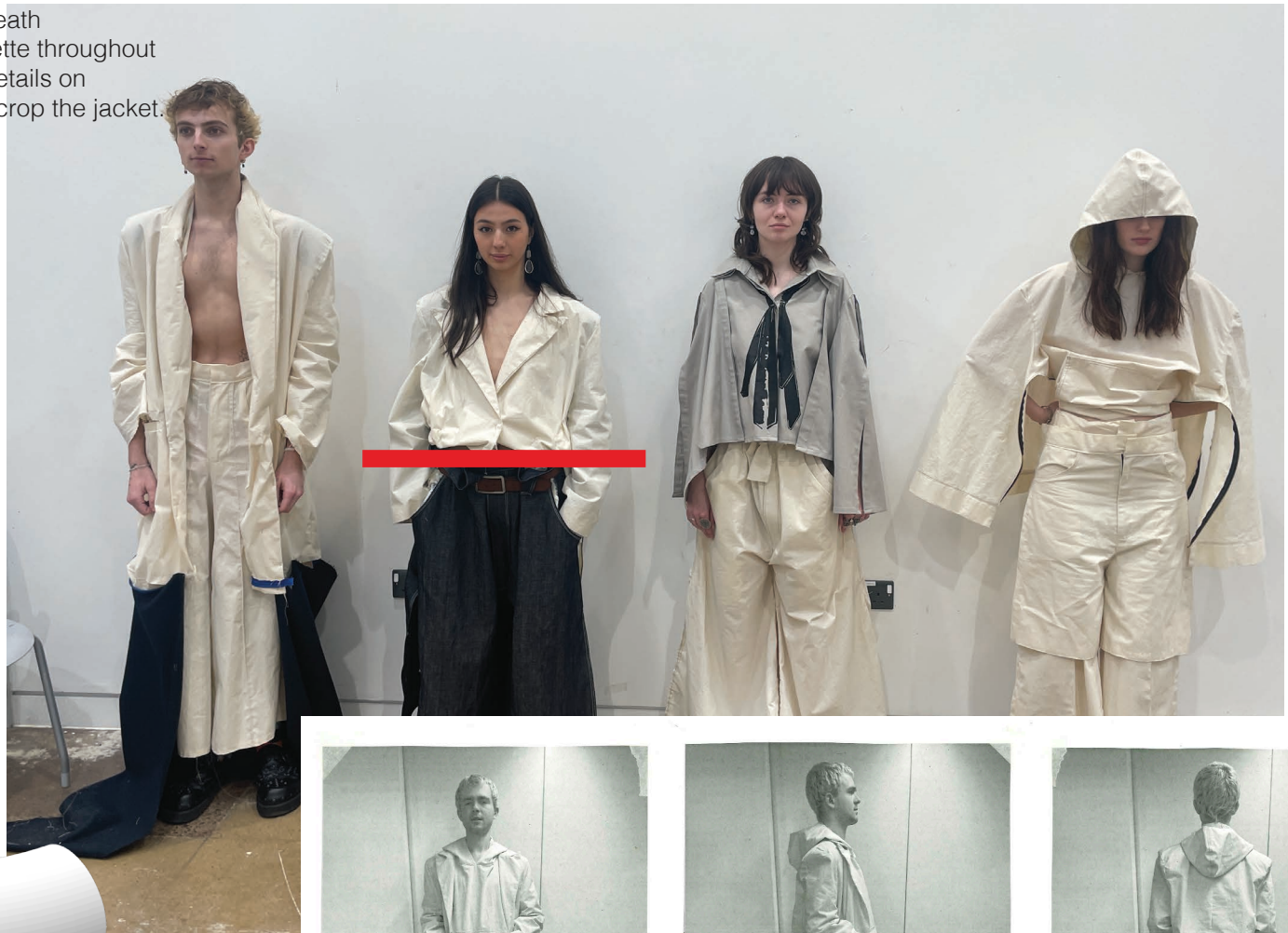
Laser engraving leather as further detail research. Meant for back of Denim trousers as seen on market research.



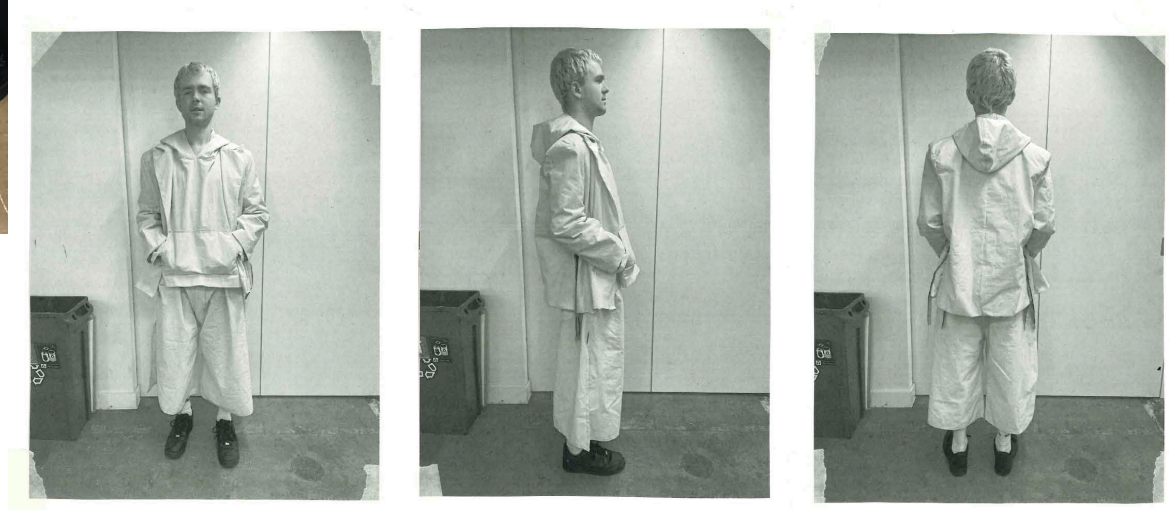
Looking at details such as custom zips with HYSEN logo. Done by engraving and swapping out zip pull.

HYSEN

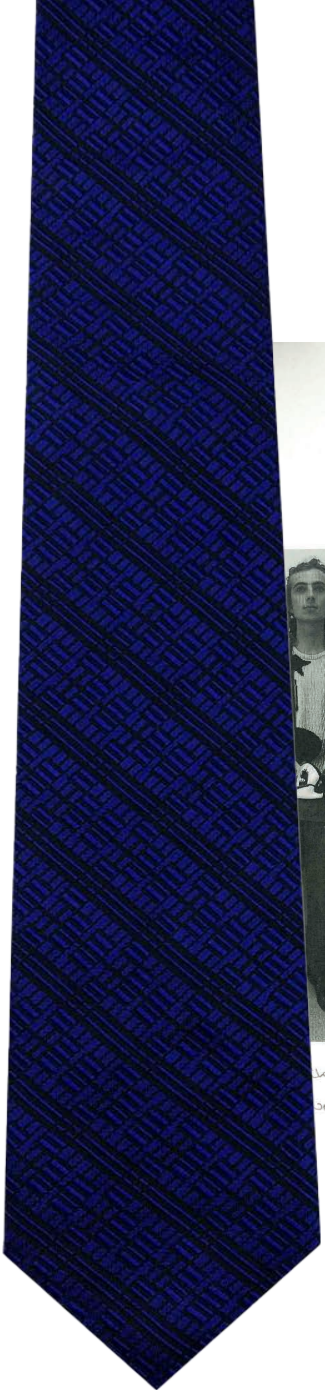
Pre-toile review, I had a jumper underneath the tailored jacket. Decided that silhouette throughout the collection was too similar and the details on the trousers were hidden, so I should crop the jacket.



Developing custom jewelry to be 3D printed out of recyclable, decomposable plastics.



Reiterating the original concept, this time having 'outgrown' the garment. Outgrown your school uniform.



like the punk bearing → formal



→ I really like the idea of the pillows. feels very child like
↓ what if the jacket was even longer?

ing 3/08/23
est silhouette



• draped bla shoulders.



Finishing details on look 2. Custom zip pulls, custom lining with logo.



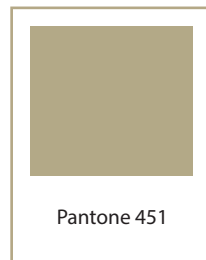
Pockets unzip and become small side bag when attached with belt (tie).





Print development, inspired from the concept of pretending to wear a tie.

HYSEN



Pantone 451



Pantone 427

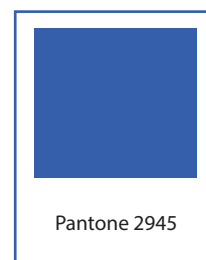
LOOK 1

FABRIC 1 (JACKET) : 100% Cotton

FABRIC 2 (JACKET LINING) : 90% Polyester 10% Nylon

FABRIC 3 (TROUSERS) : 70% Polyester 30% Cotton

FABRIC 4 (TROUSER LINING) : 90% Polyester 10% Nylon



Pantone 2945



Pantone 303

LOOK 2

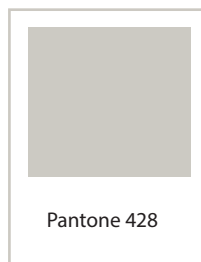
FABRIC 1 (SHIRT) : 60% Polyester 40% Cotton

FABRIC 2 (TROUSERS) : 100% Denim

FABRIC 3 (TROUSER LINING) : 80% Cotton 20% Polyester



Pantone 2757



Pantone 428

LOOK 3

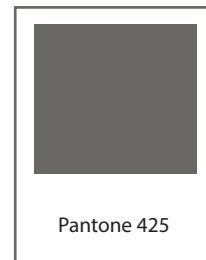
FABRIC 1 (HOODIE) : 40% Polyester 20% Silk 40% Nylon

FABRIC 2 (RIBBING) : 10% Cotton 10% Nylon 80% Polyester

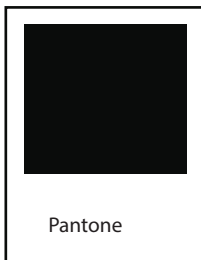
FABRIC 3 (TROUSERS) : 90% Wool 10% Polyester

FABRIC 4 (SHORTS) : 100% Wool

FABRIC 5 (SHORTS/TROUSER LINING) : 80% Cotton 20% Polyester



Pantone 425



Pantone

LOOK 4

FABRIC 1 (JACKET) : 100% Wool

FABRIC 2 (JACKET LINING) : 90% Polyester 10% Nylon

FABRIC 3 (TROUSERS) : 100% Denim

FABRIC 4 (TROUSER POCKET LINING) : 90% Polyester 10% Nylon

FABRIC 5 (TROUSER POCKET FACING) : 40% Polyester 20% Silk 40% Nylon



